

EMERGE





How Australia Homes.

Home. For most of us, that's the Great Australian Dream. More than a house, home is where we find comfort. Where we feel safe. It's the place where we truly belong. The value we place in 'home' is undeniable. It's what defines us, because home is about more than where you live, it's about who you are.

That's what moved Gary Simonds to build the very first 'Simonds' home, for his mum back in 1949. We've given every home the same care since, because to most Australians who build with us, it's their first time too.

For 75 years, we've worked hard, through invention and innovation. Making this Great Australian Dream a reality by placing homeownership within Australia's reach. Our country is home to all - and because belonging looks different to all of us, 'home' will always look different too.

We know Australia. We've been building it for a long time. Simonds has homed generations, and we understand the distinct fabric of our country because we build more of it every day. It's this legacy and knowledge that will help home families for generations to come. Because at Simonds, we don't build a home just for the building, we build it for the life that fills it.

Simonds has helped shape Australia. Few can say that. Whether we're looking back at the homes of yesteryear, what we're building now, or everything that's still to come.

We've not only shaped what Australia looks like, but more importantly, *how Australia homes.*

The Simonds story all started with a passionate family-man, Gary Simonds. He envisioned a builder that Australians could rely on to guide them through the process of crafting their perfect home, and this vision remains at the heart of our business today.

Over 75 years on, our extensive experience enables us to provide unique insights into building the ideal family home, with a personalised approach that caters to individual needs.

As we adapt to the future, we remain committed to helping Australians fulfil their dream of owning a quality, affordable home.

The Simonds Difference

- ✓ Fixed price guarantee
- ✓ Guaranteed site start
- ✓ Lifetime structural guarantee
- ✓ Multi-award winning
- ✓ Building quality homes for 75 years





Contents

Single Storey Designs

Min Lot Width	Min Lot Depth	Design	Page
8.5	21	Karri 13	20
	25	Karri 16	22
10.5	21	Finch 16	32
	25	Finch 18	34
	28	Finch 20	36
	21	Murraya 14	26
	25	Murraya 17	28
	28	Murraya 20	30
12.5	28	Cape 22	40
	28	Garnet 22	42
	30	Garnet 23	44
	25	Grampian 19	46
	28	Grampian 22	48
	21	Granite 17	50
	25	Granite 19	52
	28	Granite 22	54
	30	Granite 23	56
	25	Kiama 17	58
	25	Kiama 18	60
	28	Kiama 22	62
	28	Mundi 22	64
	30	Mundi 24	66
28	Peron 22	68	
21	Sidney 18	70	
14	21	Danella 18	74
	25	Fairlight 22	76
	28	Nowra 24	78

Double Storey Designs

Min Lot Width	Min Lot Depth	Design	Page
10.5	21	Gordon 24	84
	25	Gordon 30	86
12.5	21	Rockpool 24	90
	21	Vasse 24	92
14	21	Jackalope 25	96

All floorplans, facade images and photographs have been used for illustrative purposes only and may not represent the final product as shown. Final design may differ to meet developer, NCC and other compliance requirements. All furniture, screens, landscaping, pergolas and decorative finishes are not offered by Simonds Homes. Additional cost floor plan options, fixtures and fittings may also be shown.

Emerge Range

A range of homes that have the fundamentals, plus more, covered. Form, smart design and contemporary style take centre stage, all while bringing homeownership within reach with a place to call your own. Picture a clear path towards your first home with a fast-tracked journey to creating a sanctuary that gives you room to breathe, bountiful natural light and modern features at every turn. We've also taken all the hard work out of your colour selections process, saving you time and money with a collection of contemporary colour palettes hand-picked by our interior design team. Emerge takes you on a smooth-sailing journey, where we will listen to your needs and then take it from there.

Standard Inclusions List

Scan the QR code to see the full listing of the Emerge Range inclusions or visit simonds.com.au.





Your fast-tracked Emerge journey.

Use our simple online tool from the comfort of your couch or with a New Home Specialist in one of our beautiful displays to instantly choose and customise your dream home with pre-designed structural options and our professionally curated colour palettes.

- ✓ Instant fixed pricing
- ✓ Fast contracts
- ✓ Speed to site
- ✓ Online homebuilder tool

1 Choose the perfect plan
Pick your preferred layout from a variety of thoughtfully designed single and double storey floor plans.

2 Make it yours
Personalise your floor plan with a range of popular pre-designed structural options and get instant pricing using our convenient online homebuilder tool.

3 Select your facade
From coastal, contemporary to classic, explore our range of eye-catching designs.

4 Set the tone
Choose from our range of stylish colour palettes that have been curated by our team of expert interior designers using our 3D visualiser.

5 Take it to the next level
From kitchen and butler's pantry upgrades to flooring, electrical, and heating and cooling, we've bundled together the popular extras that families love.

6 Lock in your price
Lock in your build price with certainty and peace of mind with a \$500* initial fee.

7 Finalise your new home
Receive your build contract fast!

8 Start building
Finalise your land information and start building.



EMERGE RANGE

Single Storey

COLLECTION

Single Storey Facades



Arnott

✓ INCLUDED



Landy

✓ INCLUDED



Catani

+ UPGRADE



Dune

+ UPGRADE



Mill

✓ INCLUDED



Sunset

✓ INCLUDED



Garrett

+ UPGRADE



Olley

+ UPGRADE

For facade pricing or material and colour options, please speak to your New Home Specialist, or visit [simonds.com.au](https://www.simonds.com.au).

Facade images are for illustrative purposes only and may not represent the final product as shown. All features such as fencing, landscaping, letterbox, decking, driveway and decorative finishes are not offered by Simonds Homes and additional cost floor plan options, fixtures and fittings may also be shown. Please speak with a New Home Specialist for further details.

Single Storey

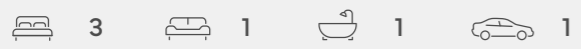
8.5m+ Lot Width

Home Designs

Min Lot Depth	Design							
21	Karri 13	3	1	1	-	-	1	-
25	Karri 16	3	1	2	-	-	1	-



Karri 13



Plan Size (WxL) **8.5m x 16.19m**
 Minimum Lot Size (WxL) **8.5m x 21m**

Room Sizes

Master Bedroom	3350 x 3280
Bedroom 2	2780 x 3280
Bedroom 3	3000 x 2990
Family	3100 x 4050
Kitchen/Dining	3290 x 4650
Garage	6000 x 3500

Facade Options

- + Arnott + Landy + Catani
- + Mill + Olley + Garrett
- + Sunset + Dune

Specifications

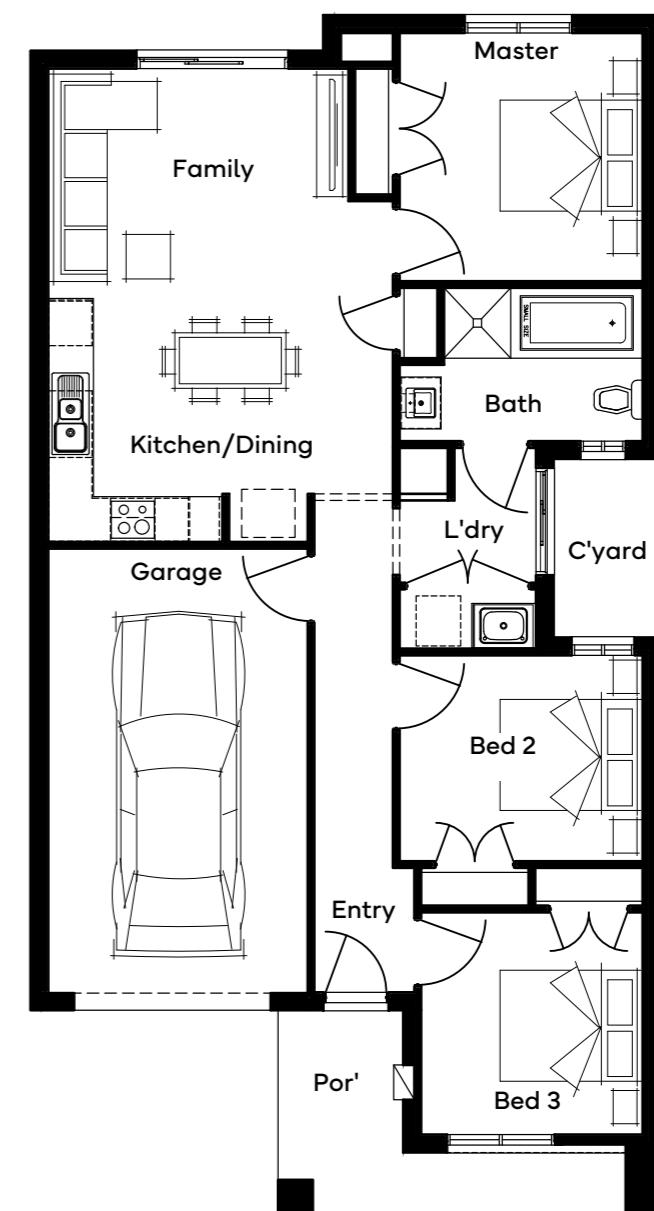
Ground Floor	92.15m ²	9.92sq
Garage	23.30m ²	2.51sq
Porch	7.58m ²	0.82sq
Total	123.03m²	13.24sq

Structural Options

- + Semi Ensuite
- + Bath

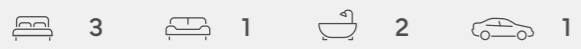


Scan for all design and facade options available with the Karri 13; or visit simonds.com.au



Standard floorplan shown

Karri 16



Plan Size (WxL) **8.5m x 19.79m**
 Minimum Lot Size (WxL) **8.5m x 25m**

Room Sizes

Master Bedroom	3540 x 3240
Bedroom 2	3000 x 3240
Bedroom 3	3020 x 2990
Family/Dining	5850 x 4690
Kitchen	2510 x 3590
Garage	6000 x 3500

Facade Options

- + Arnott + Landy + Catani
- + Mill + Olley + Garrett
- + Sunset + Dune

Specifications

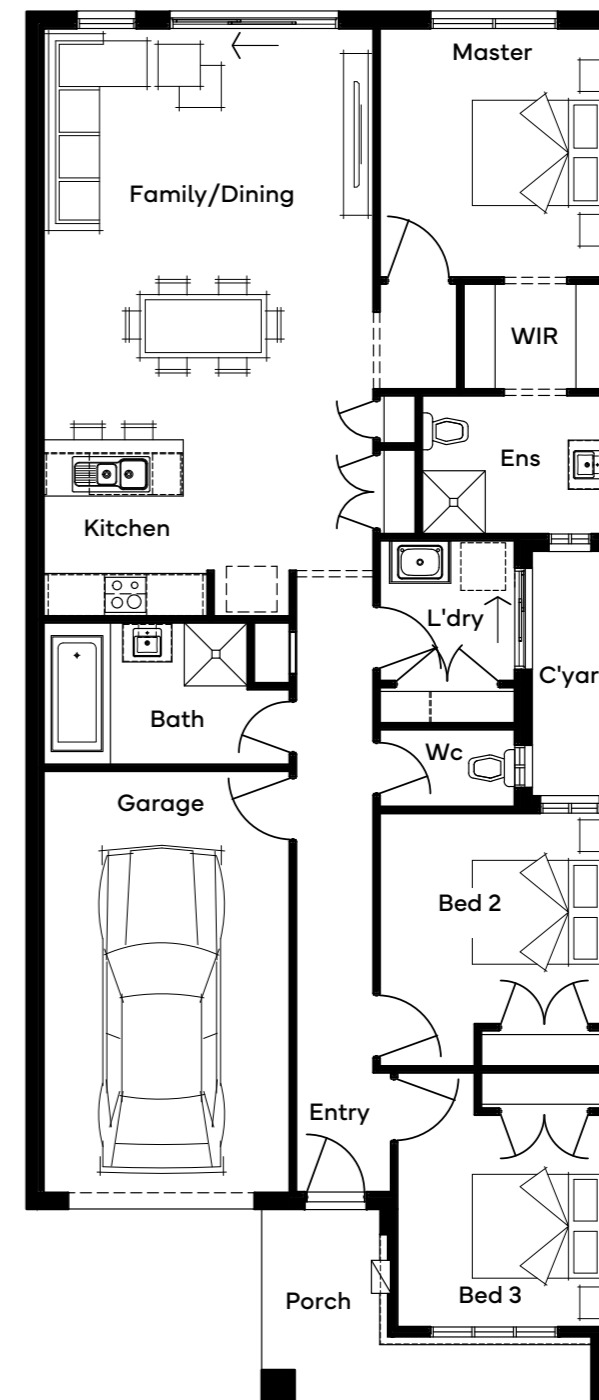
Ground Floor	123.51m ²	13.29sq
Garage	23.30m ²	2.51sq
Porch	7.58m ²	0.82sq
Total	154.39m²	16.62sq

Structural Options

- + Master to Front



Scan for all design and facade options available with the Karri 16; or visit simonds.com.au



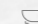
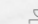
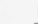
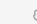
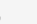


Standard floorplan shown

Single Storey

10.5m+ Lot Width

Home Designs

Min Lot Depth	Design							
21	Finch 16	3	1	2	-	-	2	1
25	Finch 18	3	1	2	-	-	2	1
28	Finch 20	3	1	2	-	-	2	1
21	Murraya 14	3	1	1	-	-	1	-
25	Murraya 17	3	1	2	-	-	1	1
28	Murraya 20	4	1	3	-	-	1	1



Finch 16

3 1 2 2

Plan Size (WxL) 10.50m x 16.67m
Minimum Lot Size (WxL) 10.5m x 21m

Room Sizes

Master Bedroom	3150 x 3110
Bedroom 2	2760 x 2820
Bedroom 3	2700 x 2950
Family	2880 x 3580
Dining	2500 x 4430
Kitchen	2530 x 2200
Garage	6000 x 5500

Facade Options

- + Arnott + Landy + Catani
- + Mill + Olley + Garrett
- + Sunset + Dune

Specifications

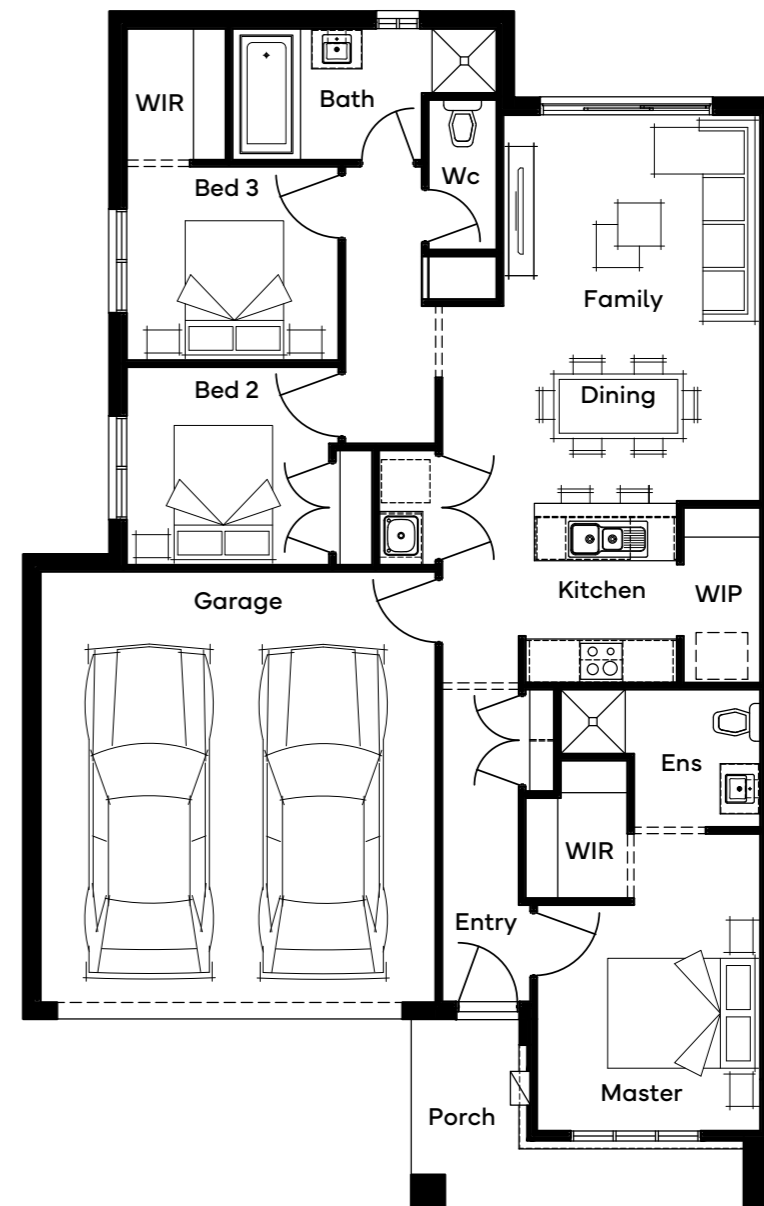
Ground Floor	104.25m ²	11.22sq
Garage	36.05m ²	3.88sq
Porch	7.00m ²	0.75sq
Total	147.30m ²	15.86sq

Structural Options

- + Ensuite



Scan for all design and facade options available with the Finch 16; or visit simonds.com.au



Standard floorplan shown

Finch 18



Plan Size (WxL) **10.50m x 19.67m**
 Minimum Lot Size (WxL) **10.5m x 25m**

Room Sizes

Master Bedroom	3540 x 3110
Bedroom 2	2900 x 3110
Bedroom 3	2710 x 3000
Kitchen	2550 x 2180
Family	3260 x 3820
Dining	2550 x 3340
Garage	6000 x 5500
Alfresco	2760 x 3910

Facade Options

- + Arnott + Landy + Catani
- + Mill + Olley + Garrett
- + Sunset + Dune

Specifications

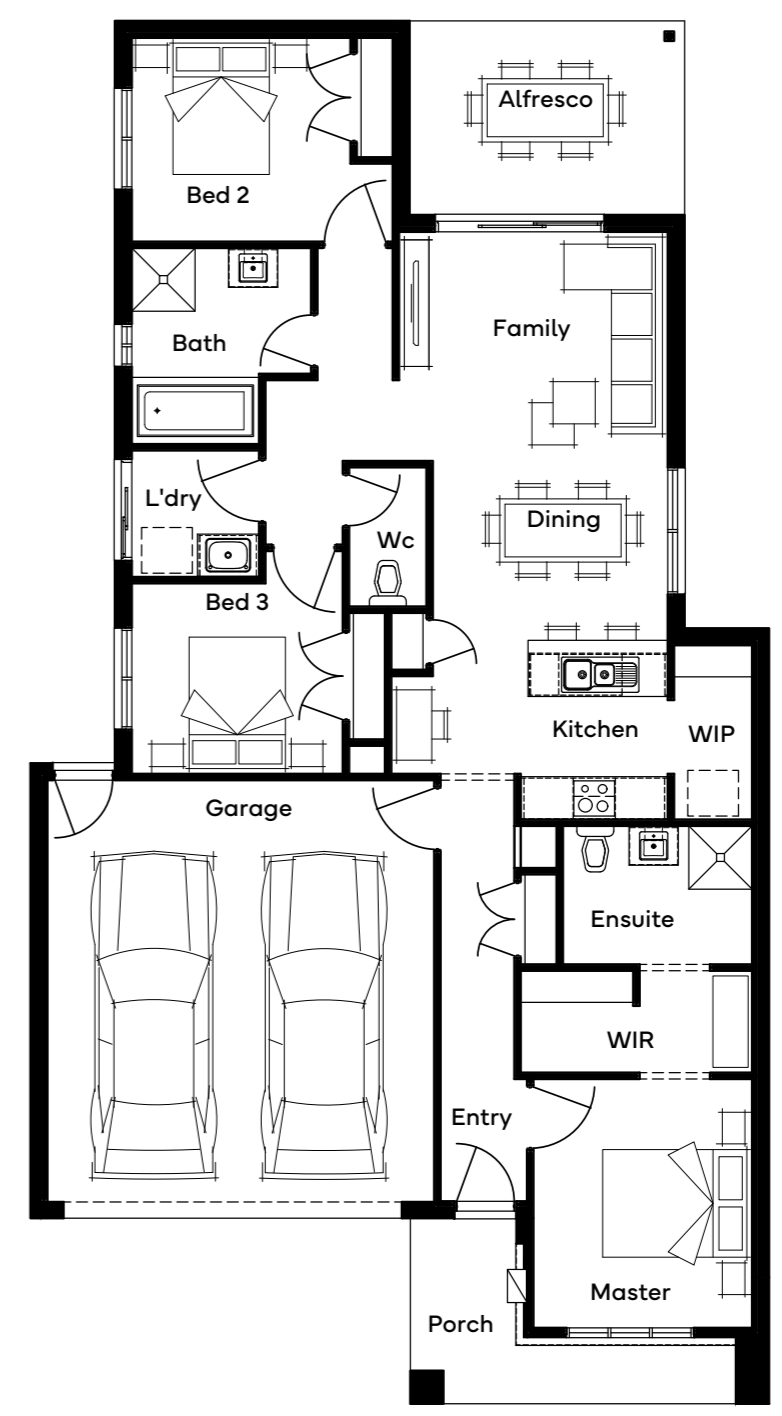
Ground Floor	115.40m ²	12.42sq
Garage	36.05m ²	3.88sq
Alfresco	10.79m ²	1.16sq
Porch	7.00m ²	0.75sq
Total	169.24m²	18.22sq

Structural Options

- + Bed 4 + Home Office
- + Bed 4 & Ensuite + Rear Flip
- + Ensuite + Rear Flip & Ensuite



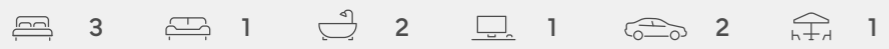
Scan for all design and facade options available with the Finch 18; or visit simonds.com.au



Standard floorplan shown

All floorplans are for illustrative purposes only and may not represent the final product. Final design may differ to meet developer, NCC and other compliance requirements. Specifications and room sizes may differ based on selected facade.

Finch 20



Plan Size (WxL) **10.50m x 22.67m**
 Minimum Lot Size (WxL) **10.5m x 28m**

Room Sizes

Master Bedroom	3590 x 3110
Bedroom 2	3050 x 3110
Bedroom 3	3000 x 3110
Family	3490 x 4420
Dining	3000 x 4420
Kitchen	2570 x 2180
Study	1800 x 2060
Garage	6000 x 5500
Alfresco	3120 x 3910

Facade Options

- + Arnott + Landy + Catani
- + Mill + Olley + Garrett
- + Sunset + Dune

Specifications

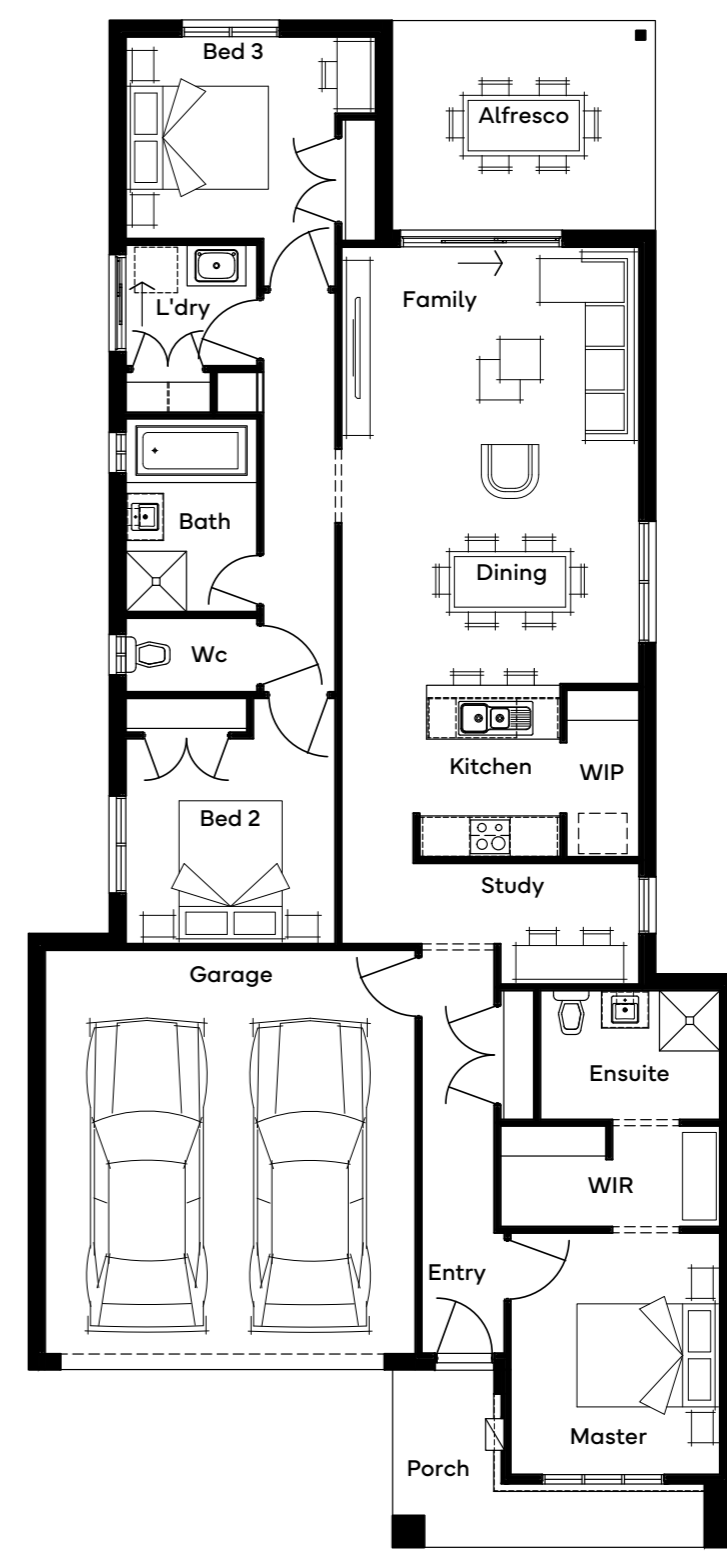
Ground Floor	135.27m ²	14.56sq
Garage	36.05m ²	3.88sq
Alfresco	12.20m ²	1.31sq
Porch	7.00m ²	0.75sq
Total	190.52m²	20.51sq

Structural Options

- + Butler's pantry + Rear Flip
- + Ensuite + Rear Flip & Butler's Pantry
- + Multi-Purpose Room



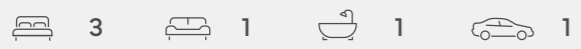
Scan for all design and facade options available with the Finch 20; or visit simonds.com.au



Standard floorplan shown

All floorplans are for illustrative purposes only and may not represent the final product. Final design may differ to meet developer, NCC and other compliance requirements. Specifications and room sizes may differ based on selected facade.

Murraya 14



Plan Size (WxL) **9.11m x 16.67m**
 Minimum Lot Size (WxL) **10.5m x 21m**

Room Sizes

Master Bedroom	3320 x 3110
Bedroom 2	2900 x 3240
Bedroom 3	2910 x 2910
Family	4230 x 3830
Kitchen/Dining	4070 x 3720
Garage	6000 x 3510

Facade Options

- + Arnott + Landy + Catani
- + Mill + Olley + Garrett
- + Sunset + Dune

Specifications

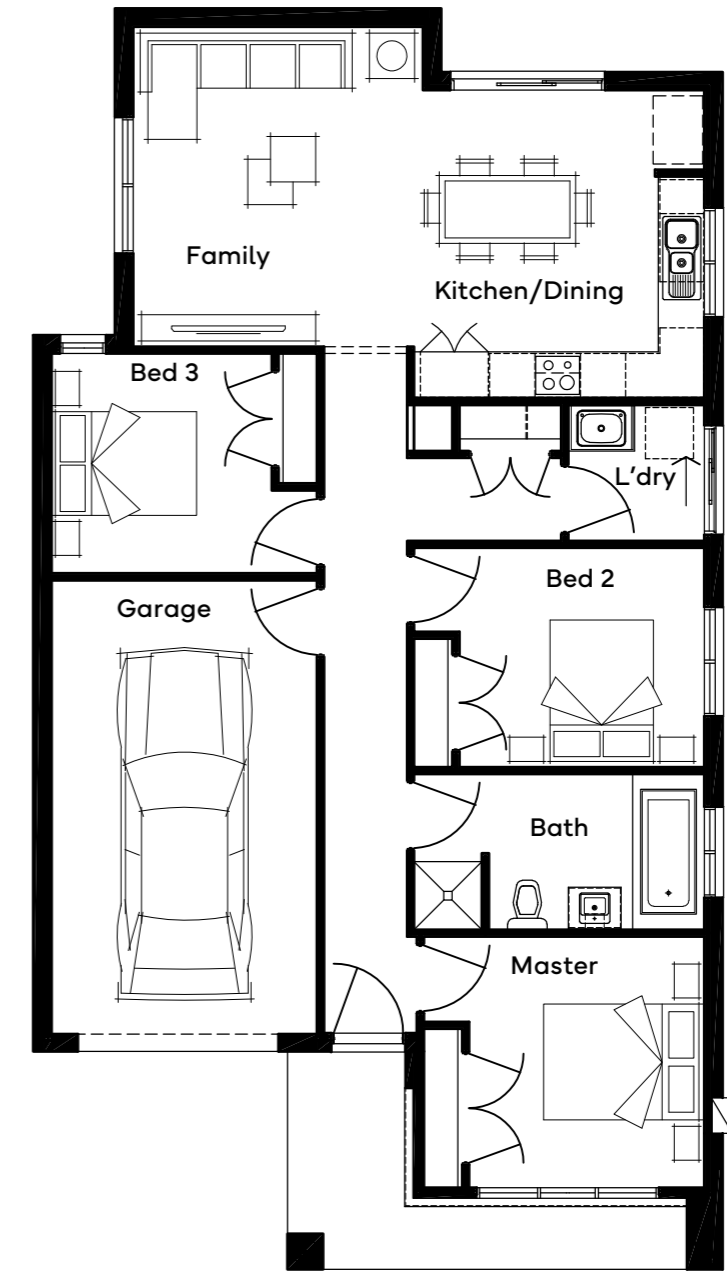
Ground Floor	103.02m ²	11.09sq
Garage	23.36m ²	2.51sq
Porch	8.01m ²	0.86sq
Total	134.39m²	14.47sq

Structural Options

- + 2 Way Bath
- + Ensuite



Scan for all design and facade options available with the Murraya 14; or visit simonds.com.au



Standard floorplan shown

Murraya 17



Plan Size (WxL) **9.11m x 19.67m**
 Minimum Lot Size (WxL) **10.5m x 25m**

Room Sizes

Master Bedroom	3210 x 3710
Bedroom 2	2800 x 3240
Bedroom 3	3030 x 2910
Family	3210 x 3480
Dining	3150 x 4070
Kitchen	2790 x 2520
Garage	6000 x 3510
Alfresco	2280 x 3480

Facade Options

- + Arnott + Landy + Catani
- + Mill + Olley + Garrett
- + Sunset + Dune

Specifications

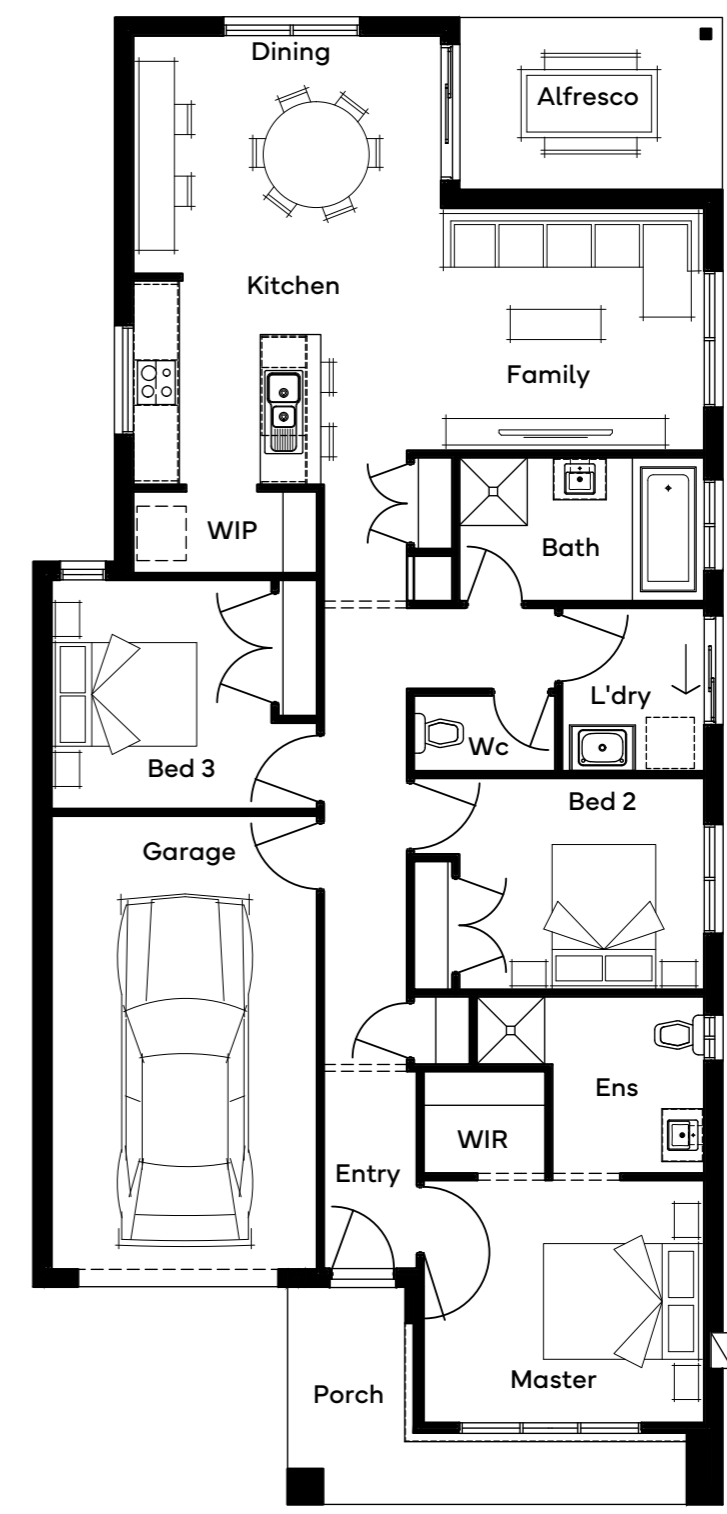
Ground Floor	122.43m ²	13.18sq
Garage	23.36m ²	2.51sq
Alfresco	7.93m ²	0.85sq
Porch	8.01m ²	0.86sq
Total	161.73m²	17.41sq

Structural Options

- + Butler's Pantry
- + Ensuite
- + Home Office



Scan for all design and facade options available with the Murraya 17, or visit simonds.com.au



Standard floorplan shown

All floorplans are for illustrative purposes only and may not represent the final product. Final design may differ to meet developer, NCC and other compliance requirements. Specifications and room sizes may differ based on selected facade.

Murraya 20



Plan Size (WxL) **9.11m x 26.67m**
 Minimum Lot Size (WxL) **10.5m x 28m**

Room Sizes

Master Bedroom	3380 x 3710
Bedroom 2	3000 x 3240
Bedroom 3	3000 x 3240
Bedroom 4	3000 x 3240
Family	3540 x 3600
Dining	3390 x 3950
Kitchen	3950 x 2520
Garage	6000 x 3510
Alfresco	2640 x 3600

Facade Options

- + Arnott + Landy + Catani
- + Mill + Olley + Garrett
- + Sunset + Dune

Specifications

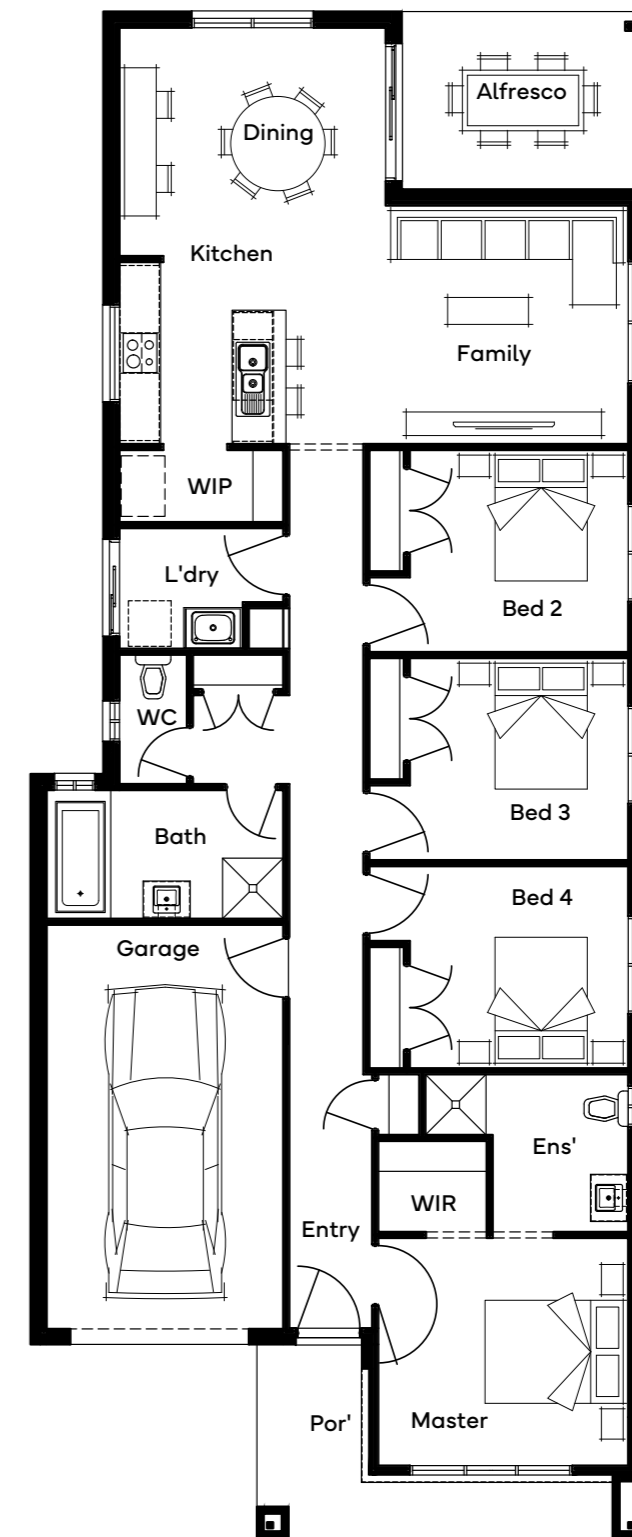
Ground Floor	143.74m ²	15.47sq
Garage	23.36m ²	2.51sq
Alfresco	9.50m ²	1.02sq
Porch	8.01m ²	0.86sq
Total	184.61m²	19.87sq

Structural Options

- + Butler's Pantry
- + Ensuite Upgrade
- + Lounge ILO Bed 4
- + Lounge ILO Bed 4 with Ensuite Upgrade



Scan for all design and facade options available with the Murraya 20; or visit simonds.com.au




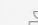
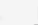
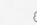
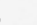


Standard floorplan shown

Single Storey

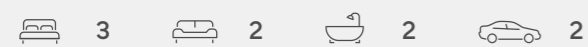
12.5m+ Lot Width

Home Designs

Min Lot Depth	Design							
28	Cape 22	3	2	3	-	-	2	-
28	Garnet 22	4	2	2	-	-	2	-
30	Garnet 23	4	2	2	-	-	2	-
25	Grampian 19	4	1	2	-	-	2	-
28	Grampian 22	4	1	2	-	-	2	1
21	Granite 17	3	1	2	-	-	2	-
25	Granite 19	3	2	2	-	-	2	-
28	Granite 22	4	2	2	-	-	2	-
30	Granite 23	4	2	2	-	-	2	-
25	Kiama 17	3	1	2	-	-	2	-
25	Kiama 18	3	1	3	-	-	2	-
28	Kiama 22	4	2	2	-	-	2	-
28	Mundi 22	4	2	2	-	-	2	1
30	Mundi 24	4	2	2	-	-	2	1
28	Peron 22	4	2	2	-	-	2	-
21	Sidney 18	4	1	2	-	-	2	-



Cape 22



Plan Size (WxL) **11.27m x 20.63m**
 Minimum Lot Size (WxL) **12.5m x 28m**

Room Sizes

Master Bedroom	4000 x 3470
Bedroom 2	3100 x 3400
Bedroom 3	3100 x 3400
Family	3820 x 4730
Dining	5000 x 2830
Kitchen	3760 x 2550
Living	3600 x 4280
Garage	6000 x 5510

Facade Options

- + Arnott + Landy + Catani
- + Mill + Olley + Garrett
- + Sunset + Dune

Specifications

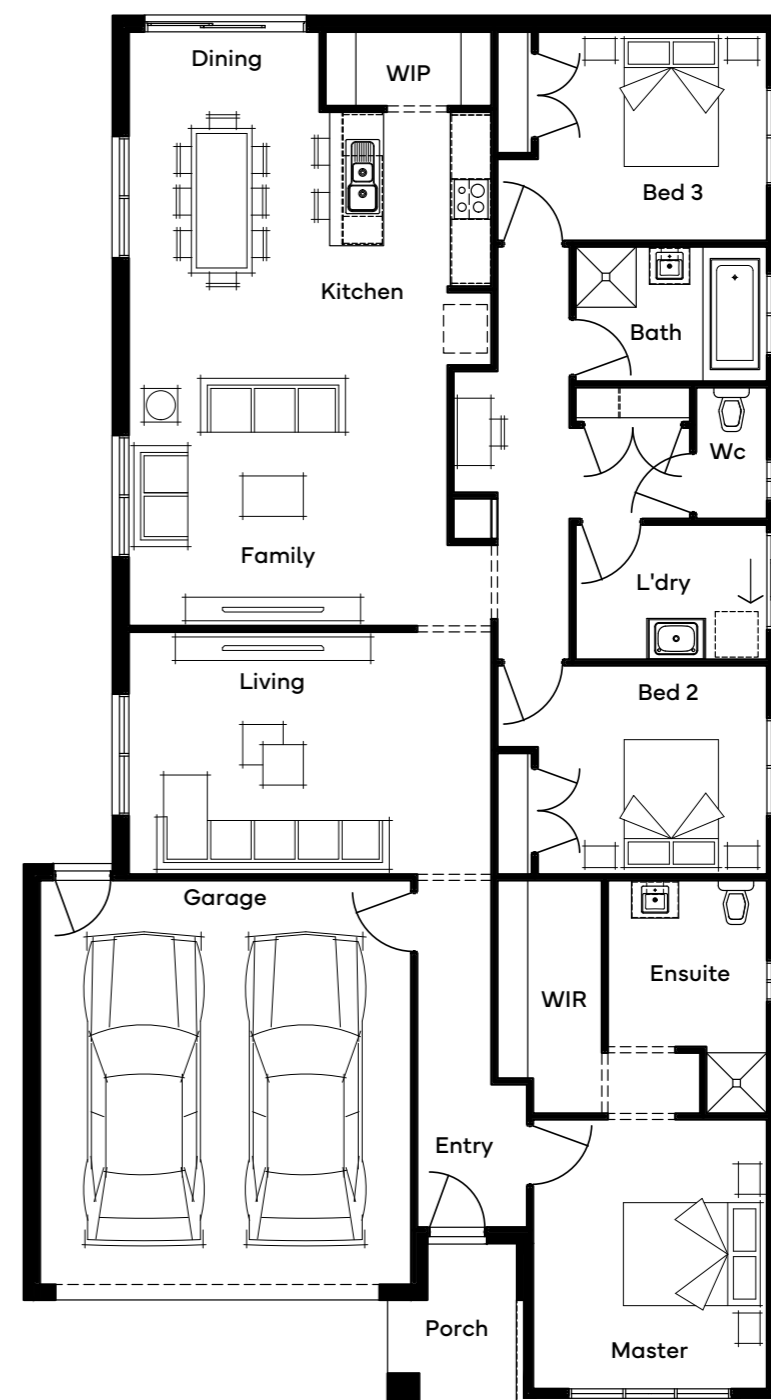
Ground Floor	166.99m ²	17.98sq
Garage	36.34m ²	3.91sq
Porch	4.11m ²	0.44sq
Total	207.44m²	22.33sq

Structural Options

- + Alfresco & Butler's Pantry
- + Alfresco & WIP
- + Bed 4
- + Butler's Pantry
- + Ensuite 1
- + Ensuite 2
- + Rear Flip
- + Rear Flip & Butler's Pantry
- + Rear Flip & Bed 4
- + Rear Flip, Alfresco & WIP
- + Rear Flip, Alfresco & Butler's Pantry



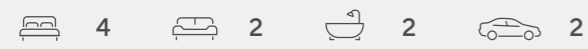
Scan for all design and facade options available with the Cape 22; or visit simonds.com.au



Standard floorplan shown

All floorplans are for illustrative purposes only and may not represent the final product. Final design may differ to meet developer, NCC and other compliance requirements. Specifications and room sizes may differ based on selected facade.

Garnet 22



Plan Size (WxL) **11.03m x 20.75m**
 Minimum Lot Size (WxL) **12.5m x 28m**

Room Sizes

Master Bedroom	3860 x 3110
Bedroom 2	3000 x 3140
Bedroom 3	3000 x 3120
Bedroom 4	3000 x 3000
Family	3590 x 3650
Dining	3050 x 4470
Kitchen	2600 x 3940
Lounge	3300 x 3920
Garage	6000 x 5510

Facade Options

- + Arnott + Landy + Catani
- + Mill + Olley + Garrett
- + Sunset + Dune

Specifications

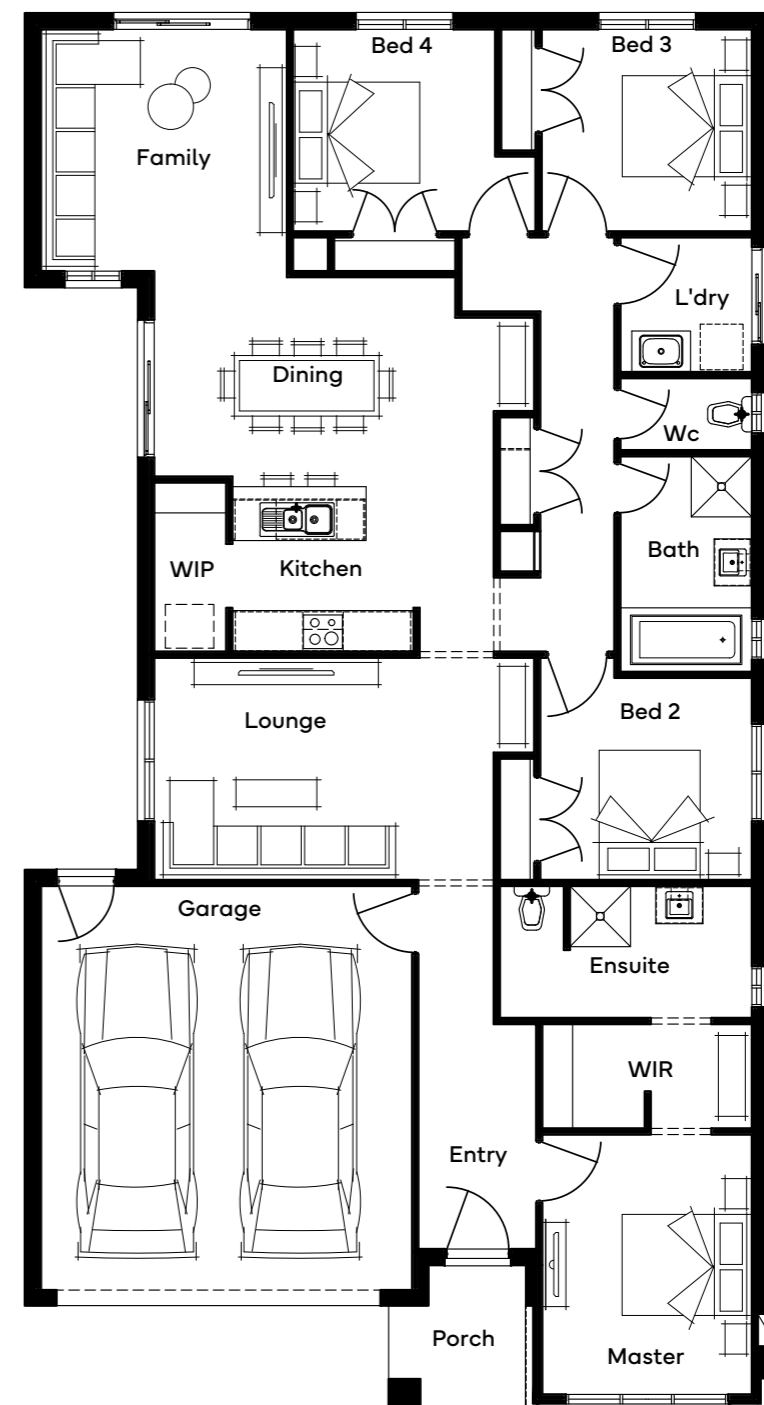
Ground Floor	165.49m ²	17.81sq
Garage	36.37m ²	3.91sq
Porch	4.05m ²	0.44sq
Total	205.92m²	22.17sq

Structural Options

- + Butler's Pantry + Kitchen
- + Lounge to Front + Rear Flip
- + Ensuite + Rear Flip with Butler's
- + Lounge to Rear + Rear with Lounge to Front



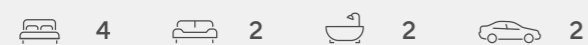
Scan for all design and facade options available with the Garnet 22; or visit simonds.com.au



Standard floorplan shown

All floorplans are for illustrative purposes only and may not represent the final product. Final design may differ to meet developer, NCC and other compliance requirements. Specifications and room sizes may differ based on selected facade.

Garnet 23



Plan Size (WxL) **11.03m x 22.07m**
 Minimum Lot Size (WxL) **12.5m x 30m**

Room Sizes

Master Bedroom	3860 x 3110
Bedroom 2	3000 x 3140
Bedroom 3	3120 x 3140
Bedroom 4	3710 x 3250
Family	4310 x 3980
Dining	3560 x 5040
Kitchen	2600 x 3940
Lounge	3300 x 3940
Garage	6000 x 5510

Facade Options

- + Arnott + Landy + Catani
- + Mill + Olley + Garrett
- + Sunset + Dune

Specifications

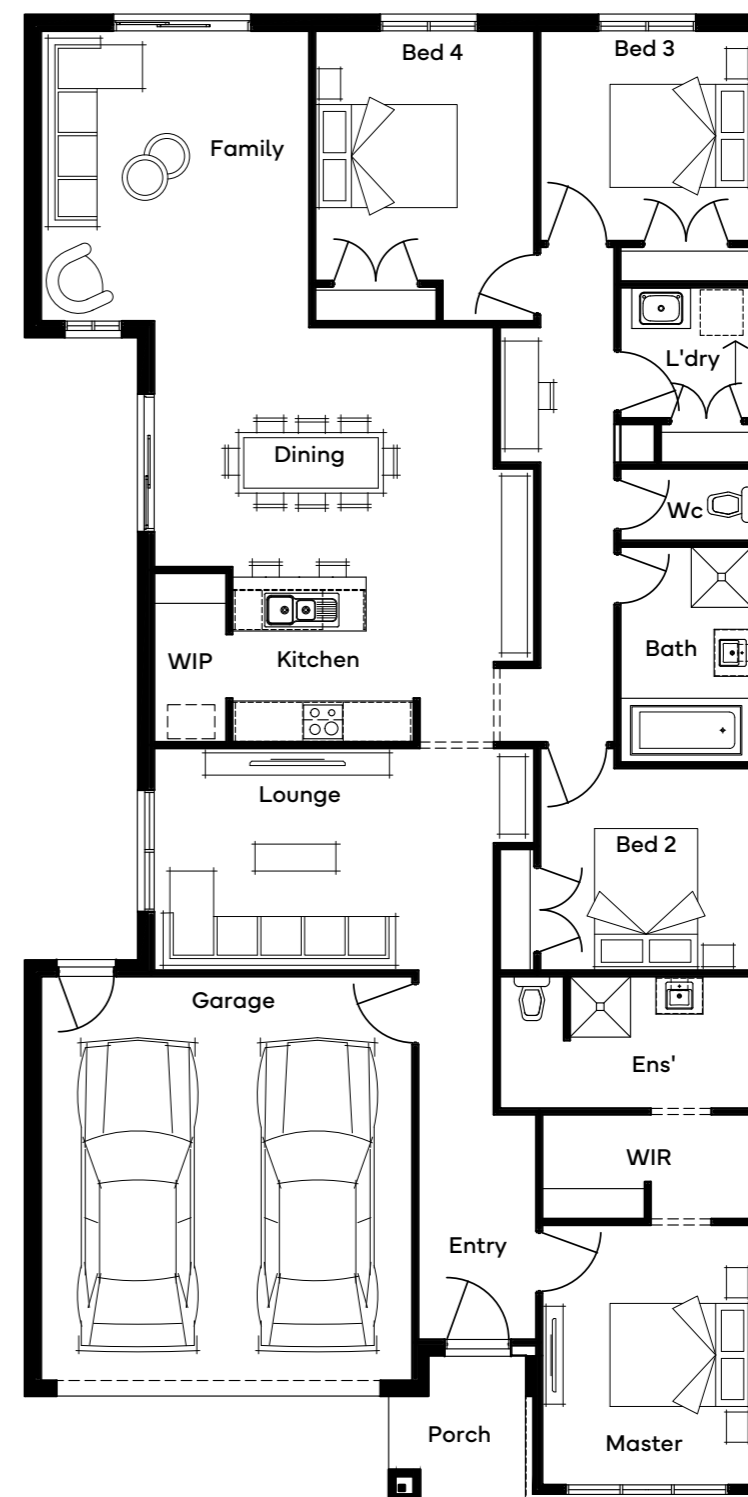
Ground Floor	179.04m ²	19.27sq
Garage	36.37m ²	3.91sq
Porch	4.05m ²	0.44sq
Total	219.46m²	23.62sq

Structural Options

- + Butler's Pantry + Rear Flip
- + Lounge to Front + Rear Flip & Butler's Pantry
- + Ensuite Upgrade + Rear Flip & Lounge to Front
- + Alt Kitchen







Scan for all design and facade options available with the Garnet 23; or visit simonds.com.au



Standard floorplan shown

All floorplans are for illustrative purposes only and may not represent the final product. Final design may differ to meet developer, NCC and other compliance requirements. Specifications and room sizes may differ based on selected facade.

Grampian 19

 4
  1
  2
  2

Plan Size (WxL) Minimum Lot Size (WxL)
11.03m x 17.87m **12.5m x 25m**

Room Sizes

Master Bedroom	4060 x 3350
Bedroom 2	2850 x 3350
Bedroom 3	3000 x 3000
Bedroom 4	3000 x 3000
Family	4660 x 2650
Dining	4660 x 2400
Kitchen	4660 x 2410
Garage	6000 x 5510

Facade Options

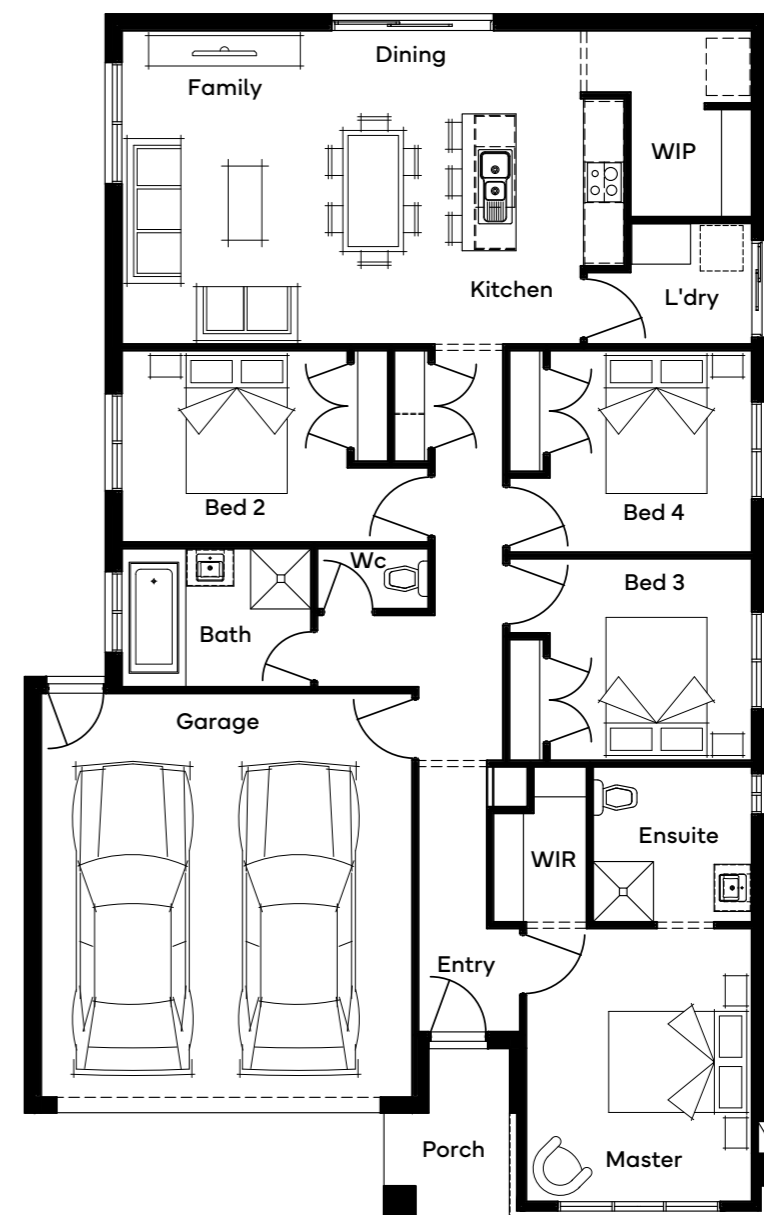
- | | | |
|----------|---------|-----------|
| + Arnott | + Landy | + Catani |
| + Mill | + Olley | + Garrett |
| + Sunset | + Dune | |

Specifications

Ground Floor	136.56m ²	14.70sq
Garage	36.34m ²	3.91sq
Porch	4.08m ²	0.44sq
Total	176.98m²	19.05sq

Structural Options

- | | |
|-------------------|-------------|
| + Butler's Pantry | + Ensuite 3 |
| + Ensuite 1 | + Rear Flip |
| + Ensuite 2 | |



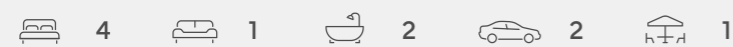
Standard floorplan shown



Scan for all design and facade options available with the Grampian 19; or visit simonds.com.au

All floorplans are for illustrative purposes only and may not represent the final product. Final design may differ to meet developer, NCC and other compliance requirements. Specifications and room sizes may differ based on selected facade.

Grampian 22



Plan Size (WxL) **11.03m x 20.75m**
 Minimum Lot Size (WxL) **12.5m x 28m**

Room Sizes

Master Bedroom	4000 x 3350
Bedroom 2	2900 x 3710
Bedroom 3	3000 x 3030
Bedroom 4	3000 x 3030
Family	3520 x 3720
Dining	3840 x 3690
Kitchen	2680 x 2460
Garage	6000 x 5510
Alfresco	3000 x 3720

Facade Options

- + Arnott + Landy + Catani
- + Mill + Olley + Garrett
- + Sunset + Dune

Specifications

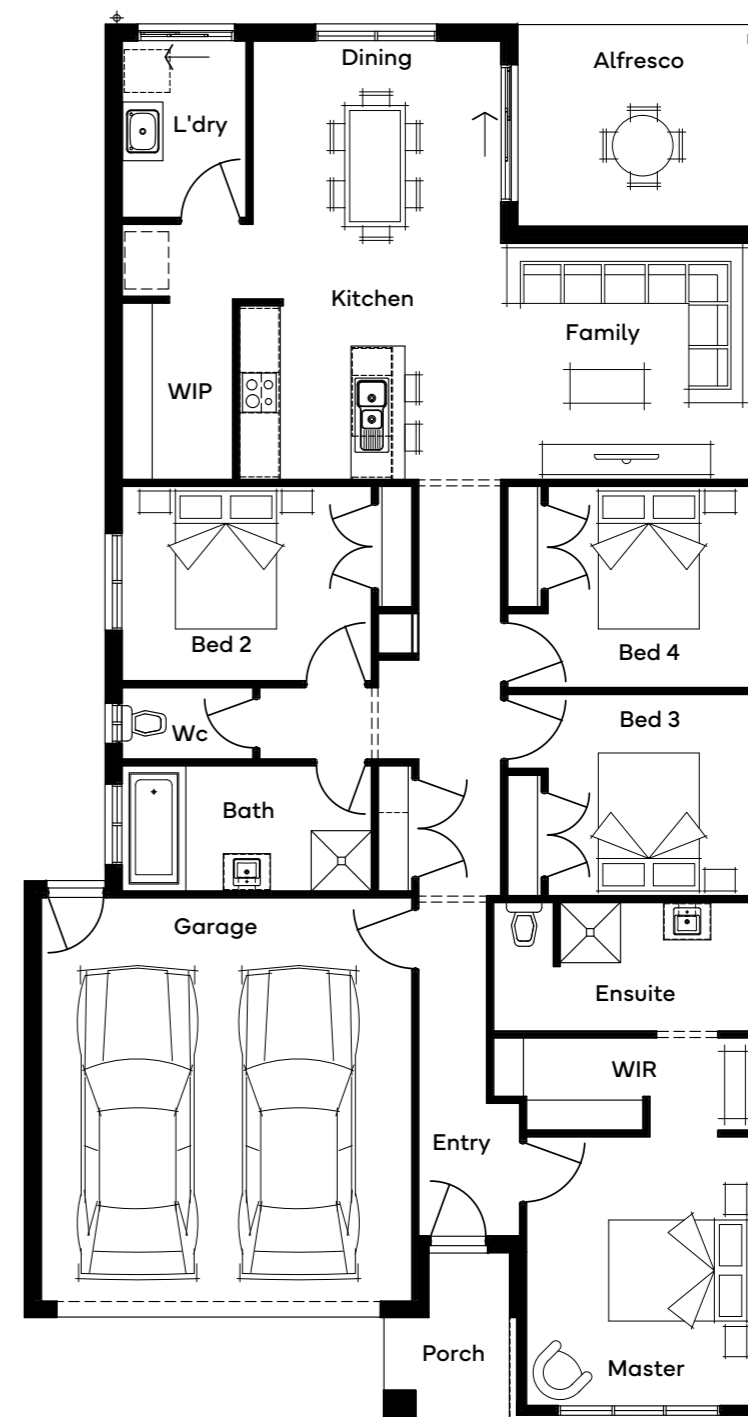
Ground Floor	153.71m ²	16.55sq
Garage	36.34m ²	3.91sq
Porch	4.08m ²	0.44sq
Alfresco	11.16m ²	1.20sq
Total	205.29m²	22.10sq

Structural Options

- + Ensuite & WIR
- + Rear Flip







Scan for all design and facade options available with the Grampian 22; or visit simonds.com.au



Standard floorplan shown

All floorplans are for illustrative purposes only and may not represent the final product. Final design may differ to meet developer, NCC and other compliance requirements. Specifications and room sizes may differ based on selected facade.

Granite 17

 3
  1
  2
  2

Plan Size (WxL)
11.27m x 15.83m

Minimum Lot Size (WxL)
12.5m x 21m

Room Sizes

Master Bedroom	3130 x 3710
Bedroom 2	2700 x 3350
Bedroom 3	2700 x 3350
Family	3790 x 4040
Dining	4450 x 2350
Kitchen	4450 x 2510
Garage	6000 x 5500

Facade Options

- + Arnott + Landy + Catani
- + Mill + Olley + Garrett
- + Sunset + Dune

Specifications

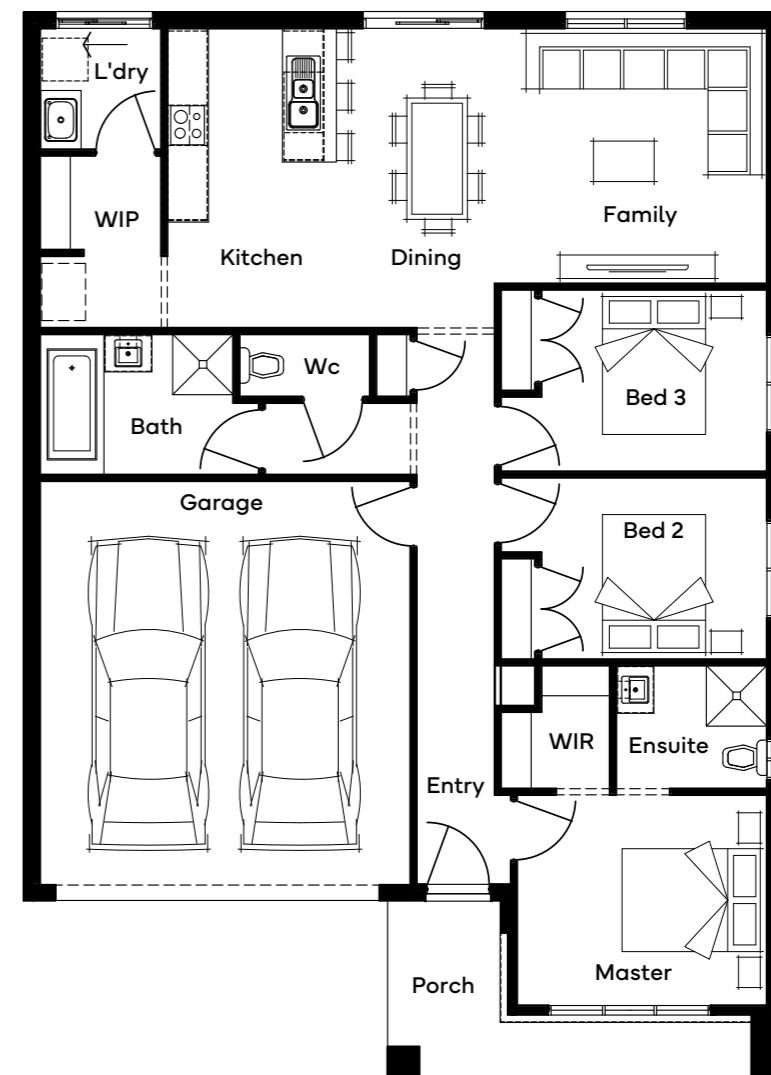
Ground Floor	120.43m ²	12.96sq
Garage	35.76m ²	3.85sq
Porch	7.95m ²	0.86sq
Total	164.14m²	17.67sq

Structural Options

- + Butler's Pantry
- + Alt Kitchen







Scan for all design and facade options available with the Granite 17; or visit simonds.com.au



Standard floorplan shown

All floorplans are for illustrative purposes only and may not represent the final product. Final design may differ to meet developer, NCC and other compliance requirements. Specifications and room sizes may differ based on selected facade.

Granite 19

 3
  1
  2
  2

Plan Size (WxL)
11.03m x 17.87m

Minimum Lot Size (WxL)
12.5m x 25m

Room Sizes

Master Bedroom	3710 x 3350
Bedroom 2	3000 x 3310
Bedroom 3	3000 x 3040
Dining	3000 x 3730
Kitchen	4460 x 2710
Living	3900 x 3730
Garage	6000 x 5510

Facade Options

- | | | |
|----------|---------|-----------|
| + Arnott | + Landy | + Catani |
| + Mill | + Olley | + Garrett |
| + Sunset | + Dune | |

Specifications

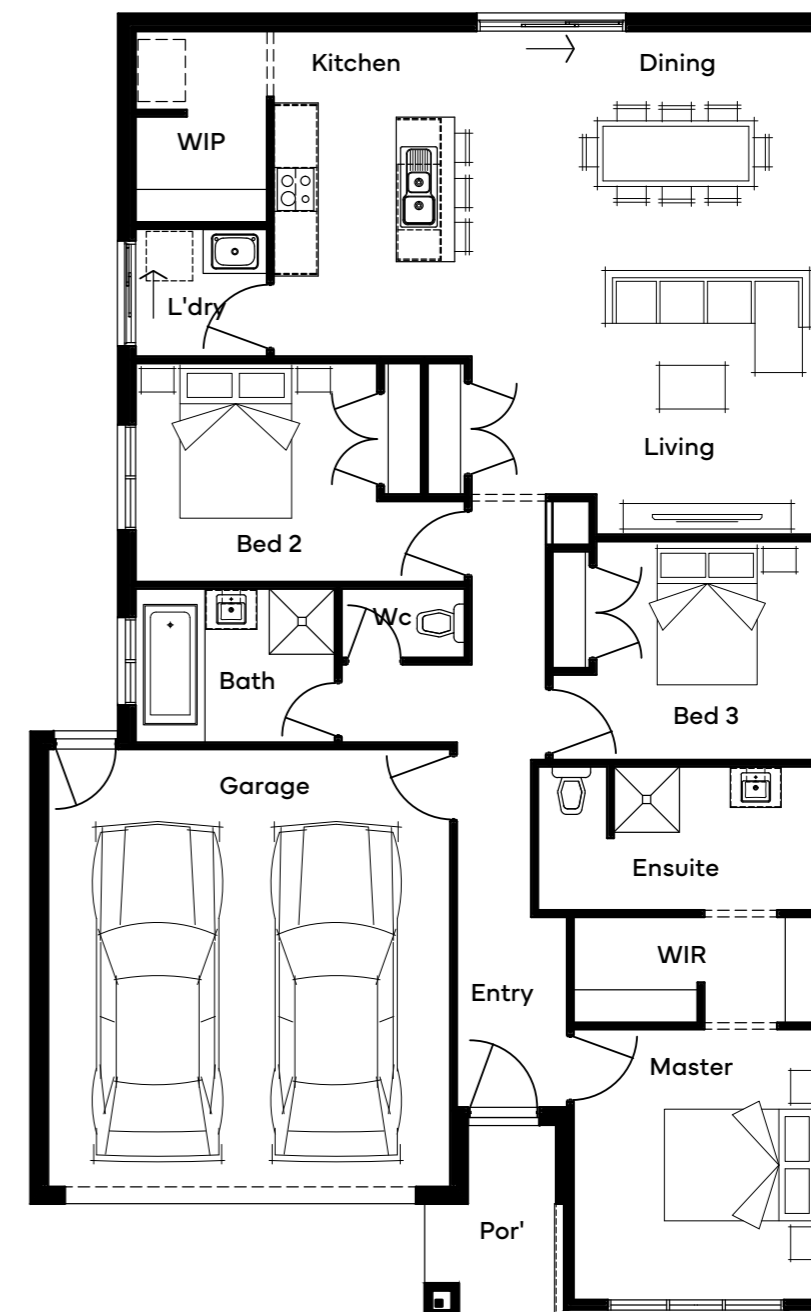
Ground Floor	136.38m ²	14.68sq
Garage	36.36m ²	3.91sq
Porch	4.11m ²	0.44sq
Total	176.85m²	19.04sq

Structural Options

- + Butler's Pantry
- + Laundry & WIP Flip
- + Laundry & WIP Flip, Butler's Pantry
- + Alt Kitchen
- + Ensuite & WIR
- + Bed 4
- + Rear Flip
- + Rear Flip & Butler's Pantry
- + Rear Flip, Laundry & WIP
- + Rear Flip, Laundry & Butler's Pantry
- + Rear Flip & Alt Kitchen



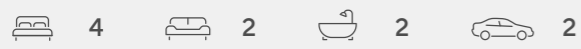
Scan for all design and facade options available with the Granite 19; or visit simonds.com.au



Standard floorplan shown

All floorplans are for illustrative purposes only and may not represent the final product. Final design may differ to meet developer, NCC and other compliance requirements. Specifications and room sizes may differ based on selected facade.

Granite 22



Plan Size (WxL) **11.03m x 20.75m**
 Minimum Lot Size (WxL) **12.5m x 30m**

Room Sizes

Master Bedroom	3710 x 3350
Bedroom 2	2900 x 3310
Bedroom 3	2900 x 3040
Bedroom 4	2810 x 3710
Dining	3000 x 3730
Kitchen	4460 x 2710
Living	3780 x 3730
Garage	6000 x 5510

Facade Options

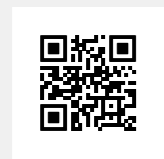
- + Arnott + Landy + Catani
- + Mill + Olley + Garrett
- + Sunset + Dune

Specifications

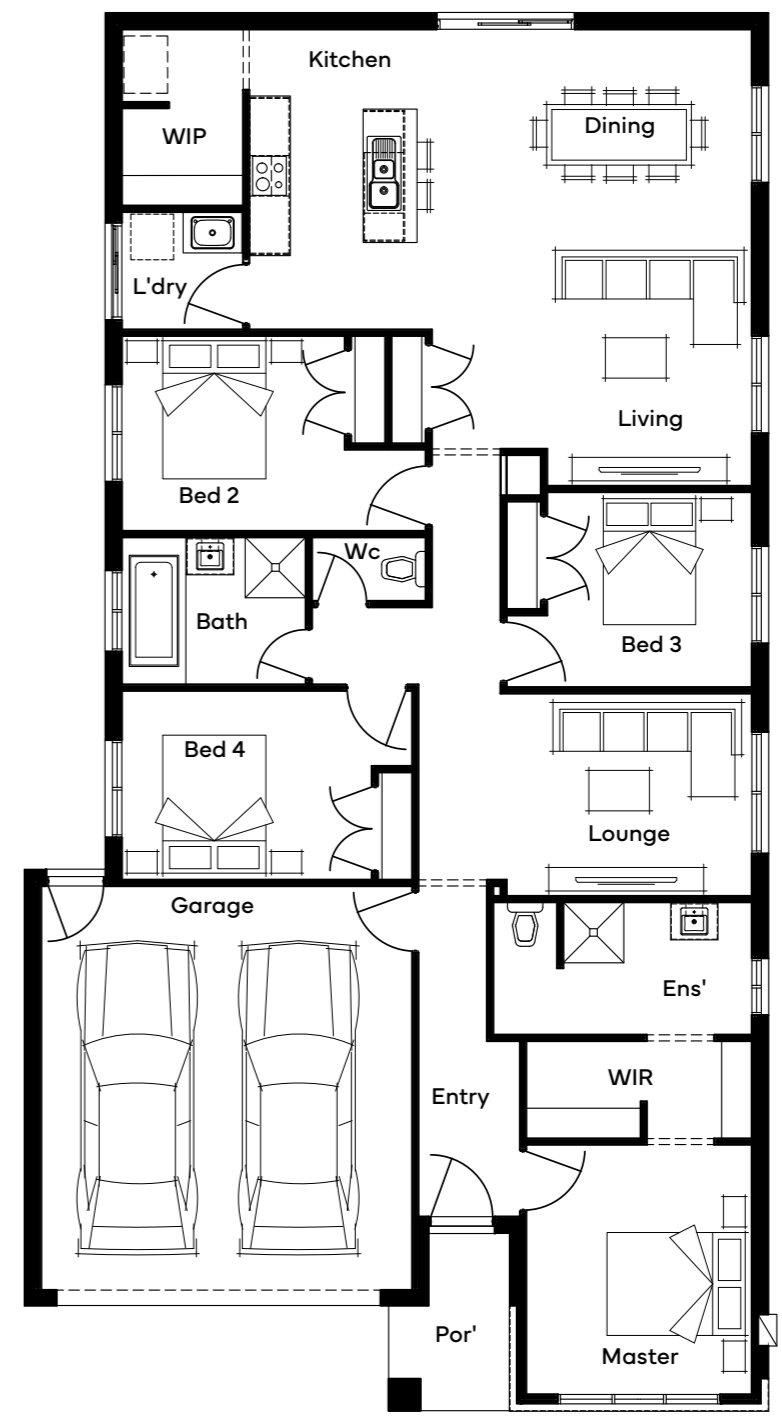
Ground Floor	164.70m ²	17.73sq
Garage	36.37m ²	3.91sq
Porch	4.11m ²	0.44sq
Total	205.18m²	22.09sq

Structural Options

- + Rear Flip
- + Butler's Pantry
- + Rear Flip & Butler's
- + Laundry & WIP Flip
- + Rear, Laundry & WIP Flip
- + Laundry & Butler's Flip
- + Rear, Laundry & Butler's Flip
- + Alt Kitchen
- + Rear Flip with Alt Kitchen
- + Ensuite & WIR
- + Bed 5 ILO Lounge
- + Lounge to Front



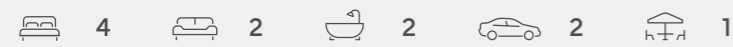
Scan for all design and facade options available with the Granite 22, or visit simonds.com.au



Standard floorplan shown

All floorplans are for illustrative purposes only and may not represent the final product. Final design may differ to meet developer, NCC and other compliance requirements. Specifications and room sizes may differ based on selected facade.

Granite 23



Plan Size (WxL) **11.03m x 22.31m**
 Minimum Lot Size (WxL) **12.5m x 30m**

Room Sizes

Master Bedroom	3950 x 3350
Bedroom 2	3000 x 3240
Bedroom 3	2800 x 3710
Bedroom 4	2950 x 3110
Lounge	3030 x 3930
Dining	5060 x 3100
Kitchen	3380 x 2650
Living	3330 x 3930
Garage	6000 x 5510
Alfresco	2760 x 3600

Facade Options

- + Arnott
- + Mill
- + Sunset
- + Landy
- + Olley
- + Dune
- + Catani
- + Garrett

Specifications

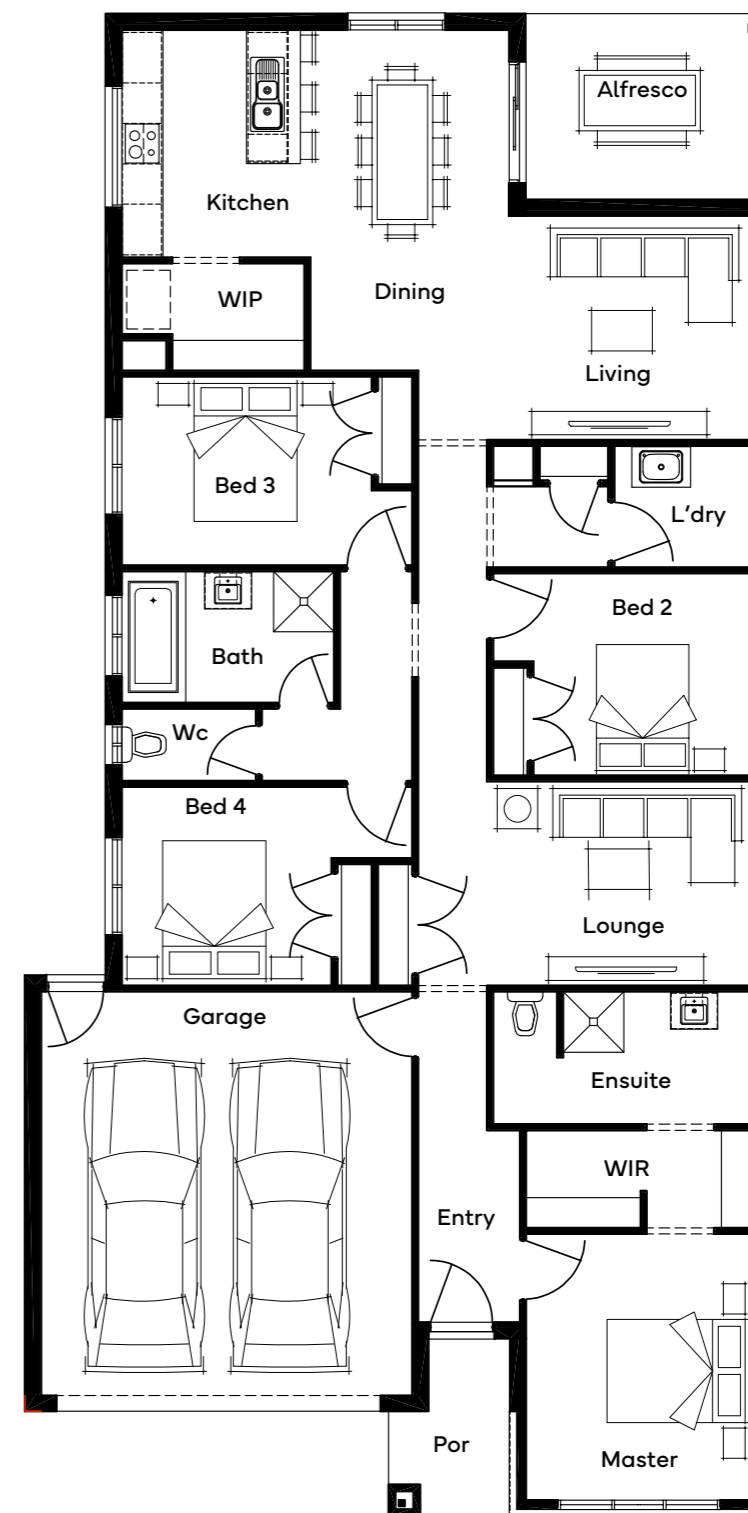
Ground Floor	170.10m ²	18.31sq
Garage	36.37m ²	3.91sq
Alfresco	9.94m ²	1.07sq
Porch	4.11m ²	0.44sq
Total	220.52m²	23.74sq

Structural Options

- + Butler's Pantry
- + Rear Flip 1
- + Rear Kitchen & Living
- + Rear Flip & Butler's Pantry
- + Ensuite & WIR
- + Bed 5 ILO Lounge
- + Lounge to Front







Scan for all design and facade options available with the Granite 23; or visit simonds.com.au



Standard floorplan shown

All floorplans are for illustrative purposes only and may not represent the final product. Final design may differ to meet developer, NCC and other compliance requirements. Specifications and room sizes may differ based on selected facade.

Kiama 17

 3
  1
  2
  2

Plan Size (WxL) Minimum Lot Size (WxL)
11.27m x 16.55m **12.5m x 25m**

Room Sizes

Master Bedroom	3240 x 3470
Bedroom 2	3000 x 3400
Bedroom 3	3000 x 2870
Family	4040 x 4110
Dining	3100 x 3000
Kitchen	2590 x 2500
Garage	6000 x 5510

Facade Options

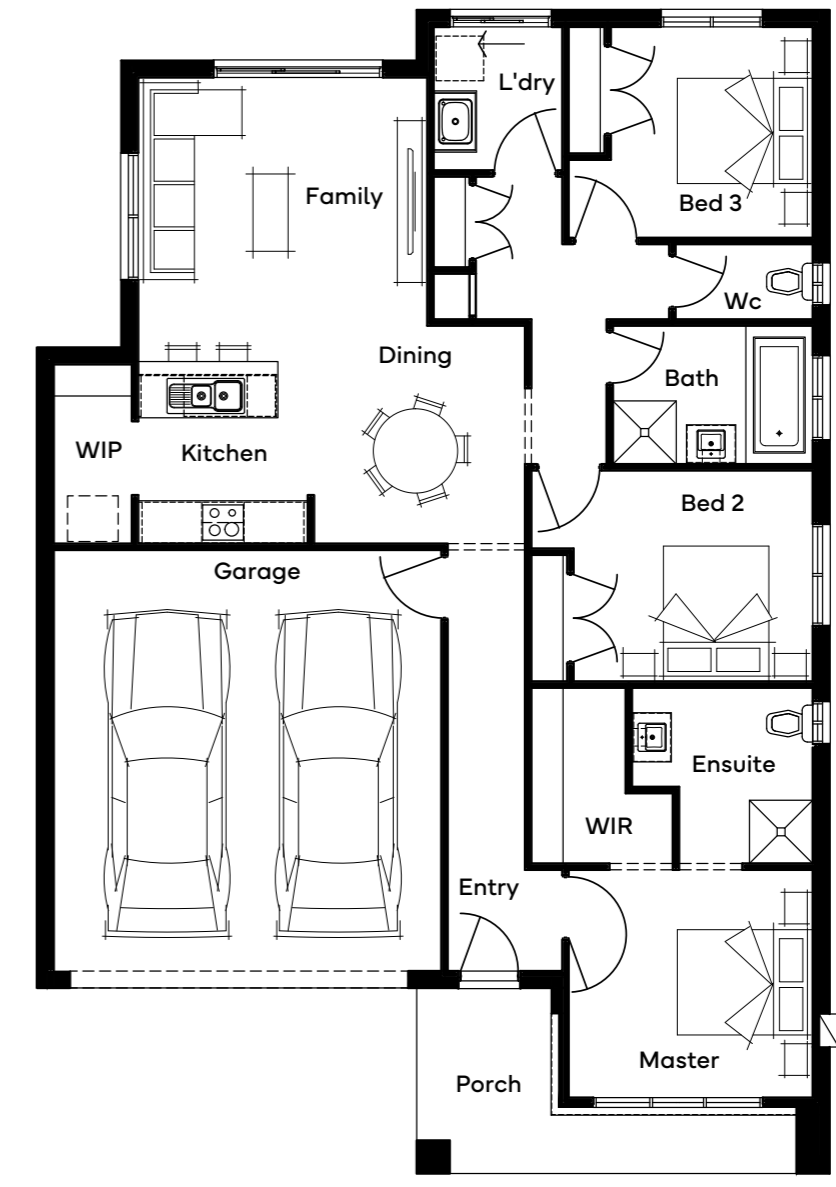
- + Arnott + Landy + Catani
- + Mill + Olley + Garrett
- + Sunset + Dune

Specifications

Ground Floor	119.27m ²	12.84sq
Garage	35.82m ²	3.86sq
Porch	8.38m ²	0.90sq
Total	163.47m²	17.60sq

Structural Options

- + Butler's Pantry + Rear Flip
- + Ensuite + Rear Flip & Butler's Pantry







Standard floorplan shown



Scan for all design and facade options available with the Kiama 17, or visit simonds.com.au

All floorplans are for illustrative purposes only and may not represent the final product. Final design may differ to meet developer, NCC and other compliance requirements. Specifications and room sizes may differ based on selected facade.

Kiama 18

 3
  1
  2
  2

Plan Size (WxL) Minimum Lot Size (WxL)
11.03m x 17.75m **12.5m x 28m**

Room Sizes

Master Bedroom	3470 x 3110
Bedroom 2	3160 x 3160
Bedroom 3	3000 x 3110
Family/Dining	7130 x 3850
Kitchen	2500 x 3000
Garage	6000 x 5510

Facade Options

- + Arnott + Landy + Catani
- + Mill + Olley + Garrett
- + Sunset + Dune

Specifications

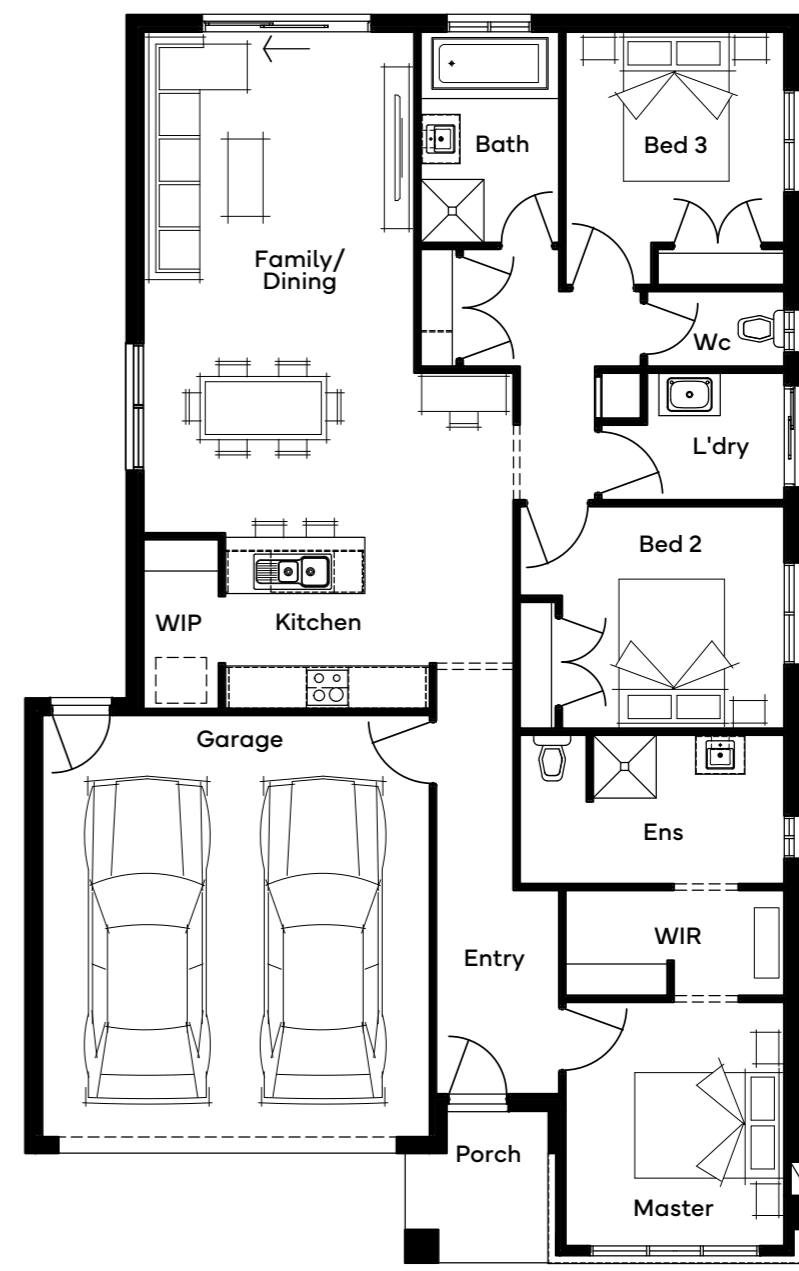
Ground Floor	133.00m ²	14.32sq
Garage	36.31m ²	3.91sq
Porch	4.05m ²	0.44sq
Total	173.36m²	18.66sq

Structural Options

- + Butler's Pantry + Rear Flip
- + Butler's Pantry 2 + Rear Flip & Butler's Pantry
- + Ensuite + WIP 2



Scan for all design and facade options available with the Kiama 18; or visit simonds.com.au



Standard floorplan shown

All floorplans are for illustrative purposes only and may not represent the final product. Final design may differ to meet developer, NCC and other compliance requirements. Specifications and room sizes may differ based on selected facade.

Kiama 22

4
 2
 2
 2

Plan Size (WxL) Minimum Lot Size (WxL)
11.03m x 20.75m **12.5m x 28m**

Room Sizes

Master Bedroom	3470 x 3110
Bedroom 2	3070 x 3160
Bedroom 3	3000 x 3160
Bedroom 4	3000 x 3110
Family/Dining	6710 x 3870
Kitchen	2500 x 3000
Living	3330 x 4160
Garage	6000 x 5510

Facade Options

- | | | |
|----------|---------|-----------|
| + Arnott | + Landy | + Catani |
| + Mill | + Olley | + Garrett |
| + Sunset | + Dune | |

Specifications

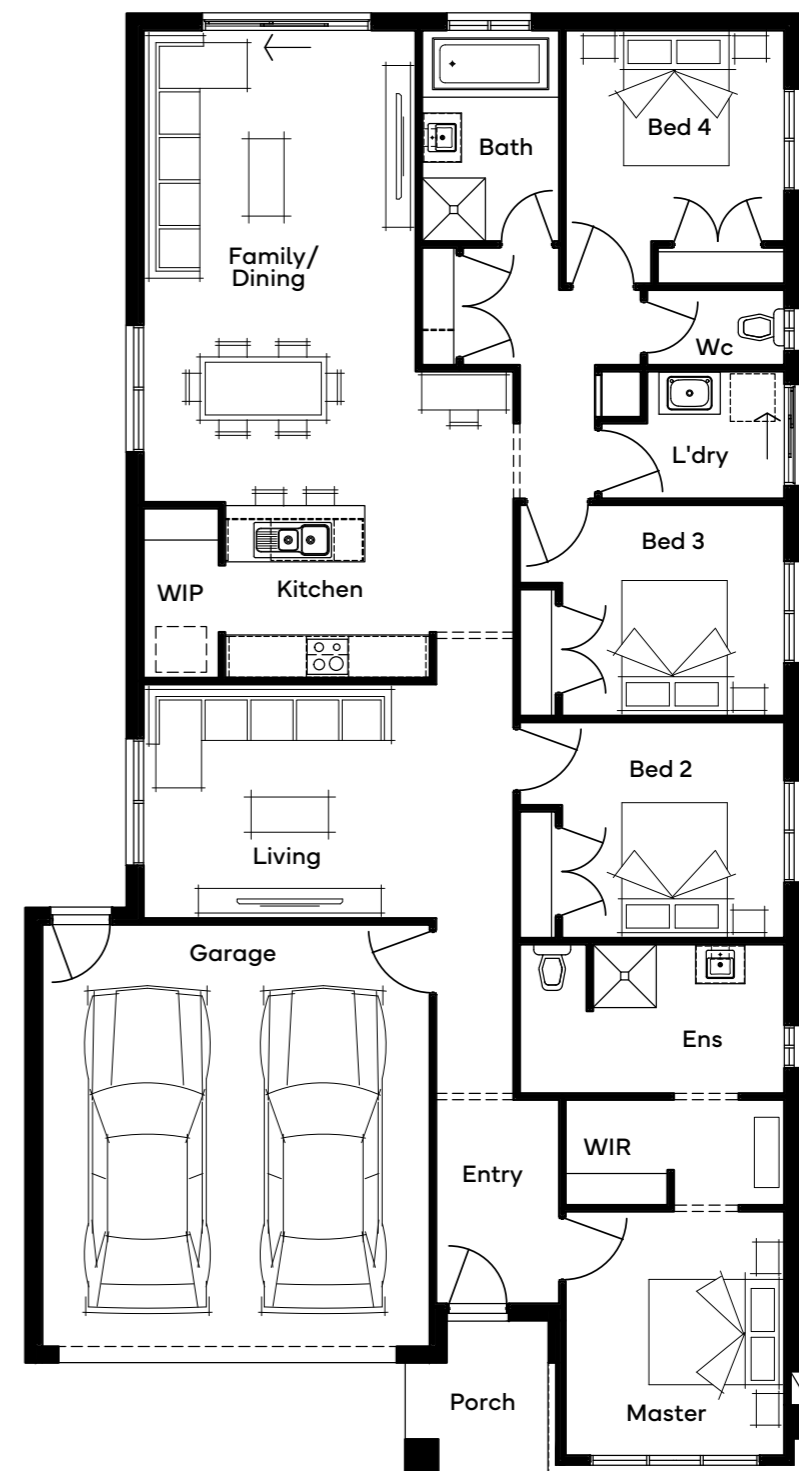
Ground Floor	161.77m ²	17.41sq
Garage	36.31m ²	3.91sq
Porch	4.05m ²	0.44sq
Total	202.13m²	21.76sq

Structural Options

- + Alfresco
- + Butler's Pantry
- + Ensuite
- + Alfresco & Butler's Pantry
- + Rear Flip
- + Rear Flip & Alfresco
- + Rear Flip, Alfresco & Butler's Pantry
- + Rear Flip & Butler's Pantry



Scan for all design and facade options available with the Kiama 22; or visit simonds.com.au



Standard floorplan shown

All floorplans are for illustrative purposes only and may not represent the final product. Final design may differ to meet developer, NCC and other compliance requirements. Specifications and room sizes may differ based on selected facade.

Mundi 22



Plan Size (WxL) **11.03m x 20.99m**
 Minimum Lot Size (WxL) **12.5m x 28m**

Room Sizes

Master Bedroom	3750 x 3120
Bedroom 2	2800 x 3230
Bedroom 3	2700 x 3230
Bedroom 4	2700 x 3230
Family	3560 x 4150
Dining	2800 x 4150
Kitchen	2670 x 3090
Media	3570 x 3230
Garage	6000 x 5510
Alfresco	3840 x 2640

Facade Options

- + Arnott + Landy + Catani
- + Mill + Olley + Garrett
- + Sunset + Dune

Specifications

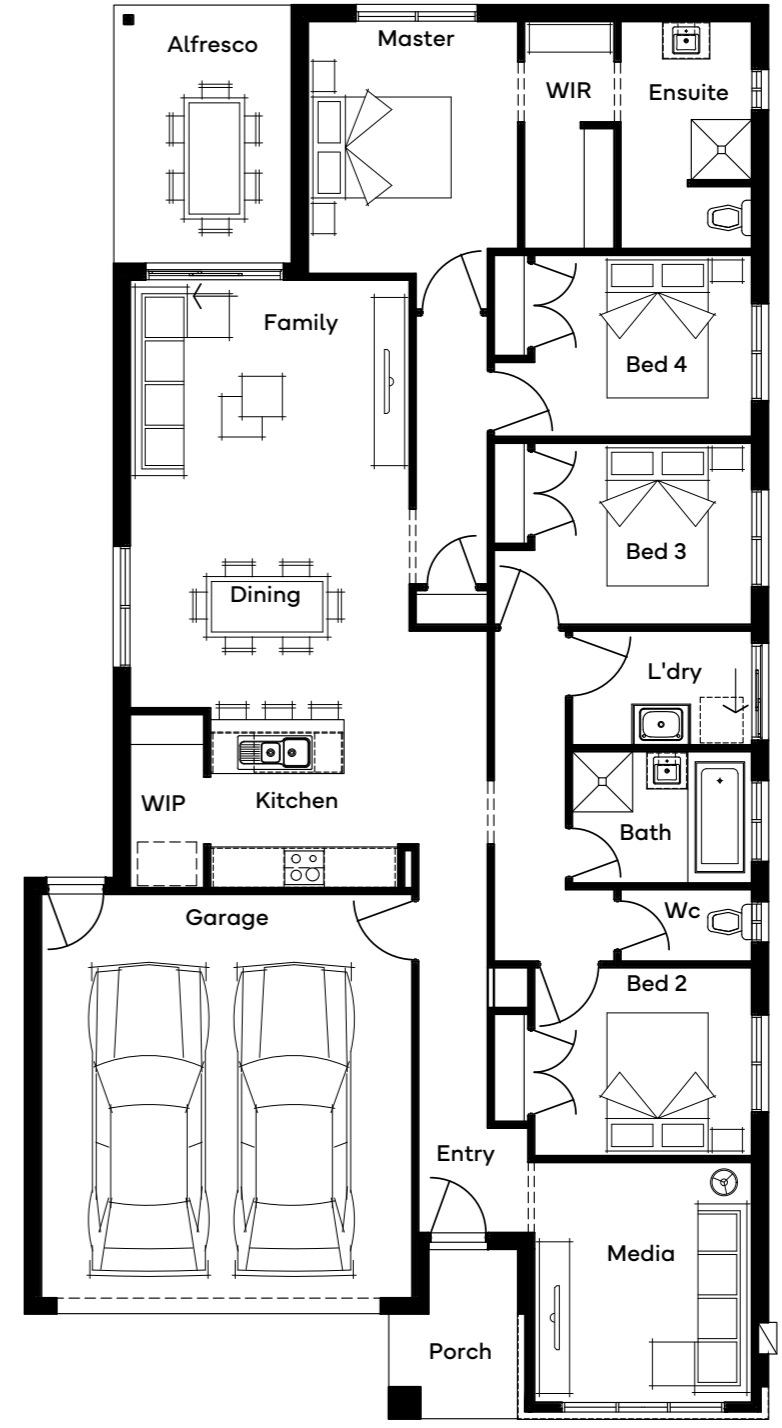
Ground Floor	155.21m ²	16.71sq
Garage	36.37m ²	3.91sq
Alfresco	10.14m ²	1.09sq
Porch	4.27m ²	0.46sq
Total	205.99m²	22.17sq

Structural Options

- + Rear Flip
- + Rear Flip & Butler's Pantry
- + Butler's Pantry
- + Linen & Broom
- + Rear Flip & Nook



Scan for all design and facade options available with the Mundi 22; or visit simonds.com.au



Standard floorplan shown

All floorplans are for illustrative purposes only and may not represent the final product. Final design may differ to meet developer, NCC and other compliance requirements. Specifications and room sizes may differ based on selected facade.

Mundi 24



Plan Size (WxL) **11.03m x 22.55m**
 Minimum Lot Size (WxL) **12.5m x 30m**

Room Sizes

Master Bedroom	3990 x 3060
Bedroom 2	3000 x 3230
Bedroom 3	3000 x 3230
Bedroom 4	3000 x 3230
Family	4680 x 3550
Dining	3000 x 4150
Kitchen	2670 x 3120
Media	4340 x 3230
Garage	6000 x 5510
Alfresco	4080 x 2640

Facade Options

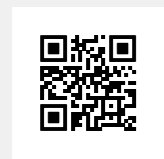
- + Arnott + Landy + Catani
- + Mill + Olley + Garrett
- + Sunset + Dune

Specifications

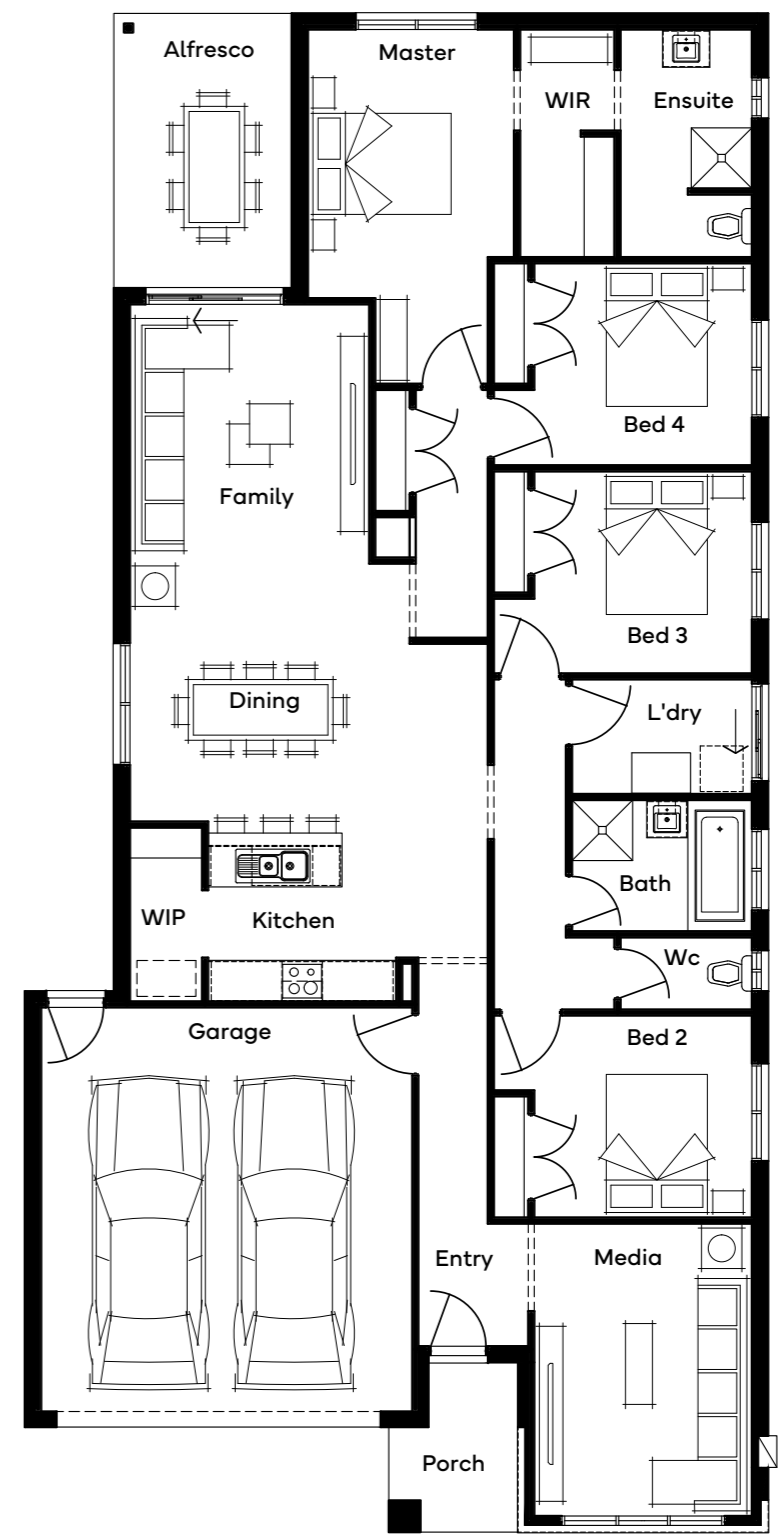
Ground Floor	169.72m ²	18.27sq
Garage	36.37m ²	3.91sq
Alfresco	10.77m ²	1.16sq
Porch	4.27m ²	0.46sq
Total	221.13m²	23.80sq

Structural Options

- + Rear Flip
- + Butler's Pantry
- + Rear Flip & Butler's Pantry



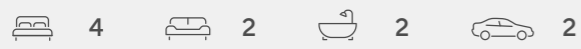
Scan for all design and facade options available with the Mundi 24; or visit simonds.com.au



Standard floorplan shown

All floorplans are for illustrative purposes only and may not represent the final product. Final design may differ to meet developer, NCC and other compliance requirements. Specifications and room sizes may differ based on selected facade.

Peron 22



Plan Size (WxL) **11.03m x 20.75m**
 Minimum Lot Size (WxL) **12.5m x 28m**

Room Sizes

Master Bedroom	3440 x 4070
Bedroom 2	2800 x 3190
Bedroom 3	2800 x 3190
Bedroom 4	3300 x 3200
Family	4820 x 3660
Dining	4820 x 3000
Kitchen	3830 x 2450
Media	3300 x 3110
Garage	6000 x 5510

Facade Options

- + Arnott + Landy + Catani
- + Mill + Olley + Garrett
- + Sunset + Dune

Specifications

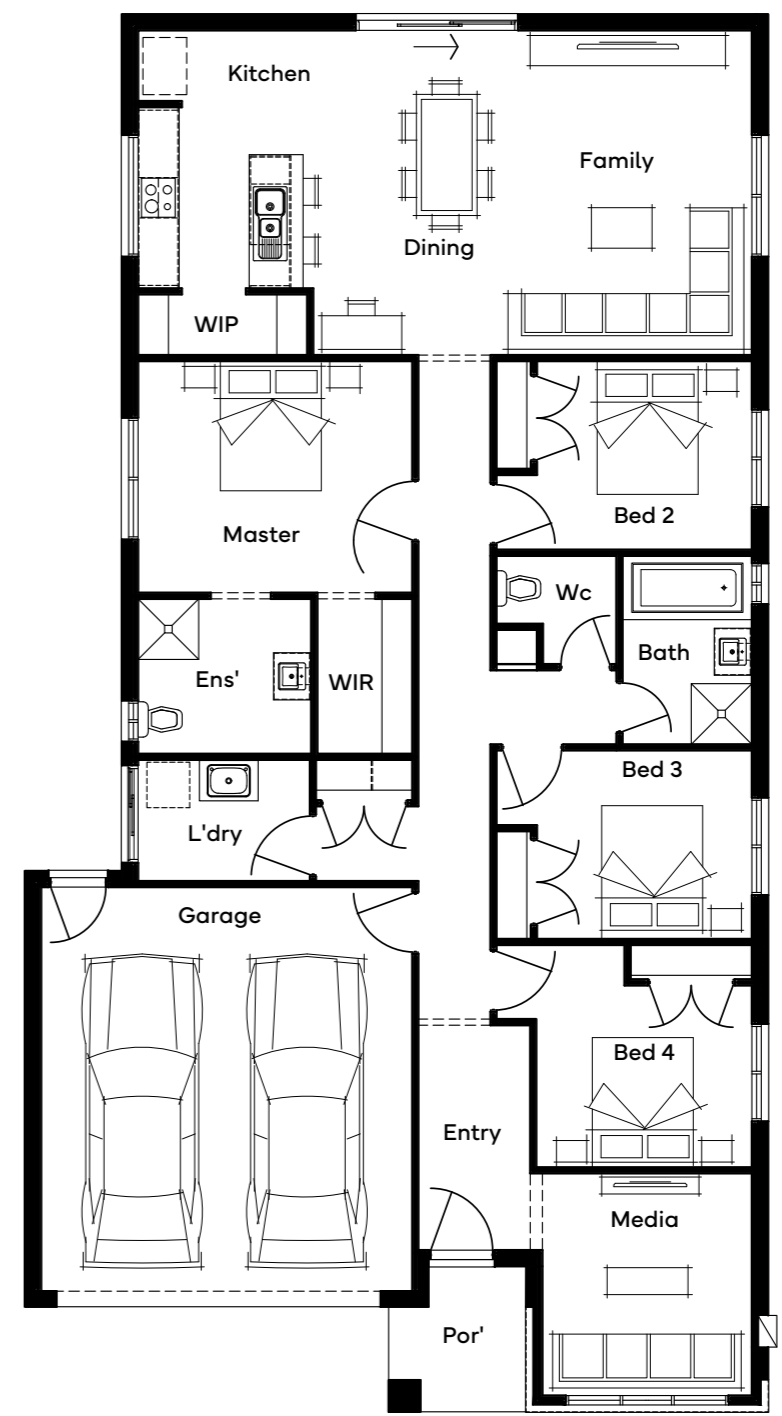
Ground Floor	161.77m ²	17.41sq
Garage	36.31m ²	3.91sq
Porch	4.05m ²	0.44sq
Total	202.13m²	21.76sq

Structural Options

- + Butler's Pantry
- + Rear Flip
- + Rear Flip & Butler's Pantry







Scan for all design and facade options available with the Peron 22; or visit simonds.com.au



Standard floorplan shown

All floorplans are for illustrative purposes only and may not represent the final product. Final design may differ to meet developer, NCC and other compliance requirements. Specifications and room sizes may differ based on selected facade.

Sidney 18

 4
  1
  2
  2

Plan Size (WxL) Minimum Lot Size (WxL)
11.27m x 16.55m **12.5m x 21m**

Room Sizes

Master Bedroom	3000 x 3470
Bedroom 2	2940 x 3150
Bedroom 3	3000 x 2990
Bedroom 4	3100 x 2880
Living/Dining	4260 x 4480
Kitchen	3450 x 2570
Garage	6000 x 5510

Facade Options

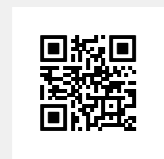
- + Arnott + Landy + Catani
- + Mill + Olley + Garrett
- + Sunset + Dune

Specifications

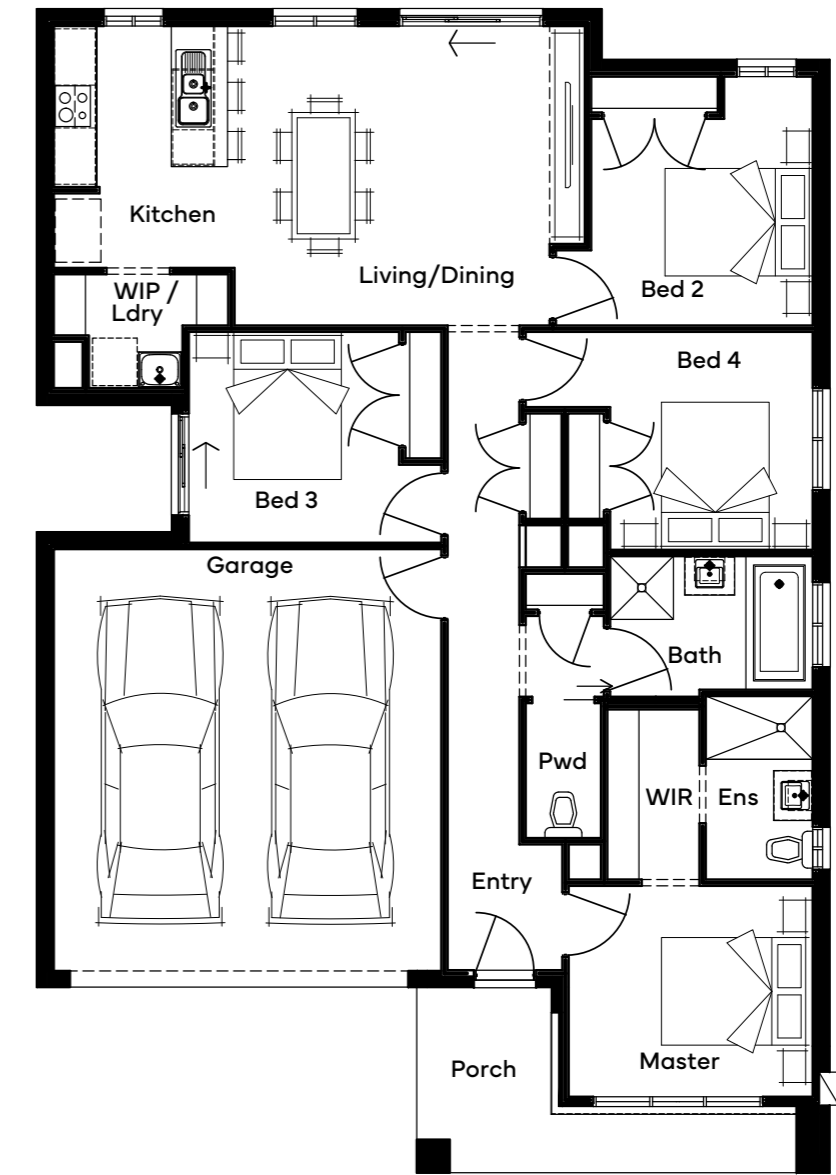
Ground Floor	121.78m ²	13.11sq
Garage	36.28m ²	3.91sq
Porch	8.39m ²	0.90sq
Total	166.45m²	17.92sq

Structural Options

- + Butler's Pantry
- + Multi-Purpose Room



Scan for all design and facade options available with the Sidney 18, or visit simonds.com.au



Standard floorplan shown

All floorplans are for illustrative purposes only and may not represent the final product. Final design may differ to meet developer, NCC and other compliance requirements. Specifications and room sizes may differ based on selected facade.

Single Storey

14m+ Lot Width

Home Designs

Min Lot Depth	Design							
21	Danella 18	3	2	2	-	-	2	-
25	Fairlight 22	4	2	2	-	-	2	-
28	Nowra 24	4	2	2	-	-	2	-



Danella 18

3
 2
 2
 2

Plan Size (WxL) Minimum Lot Size (WxL)
12.59m x 15.35m **14m x 21m**

Room Sizes

Master Bedroom	4000 x 3000
Bedroom 2	2850 x 3640
Bedroom 3	2860 x 3080
Dining	2850 x 3230
Kitchen	3540 x 2610
Living	5430 x 3350
Garage	6000 x 5510

Facade Options

- + Arnott + Landy + Catani
- + Mill + Olley + Garrett
- + Sunset + Dune

Specifications

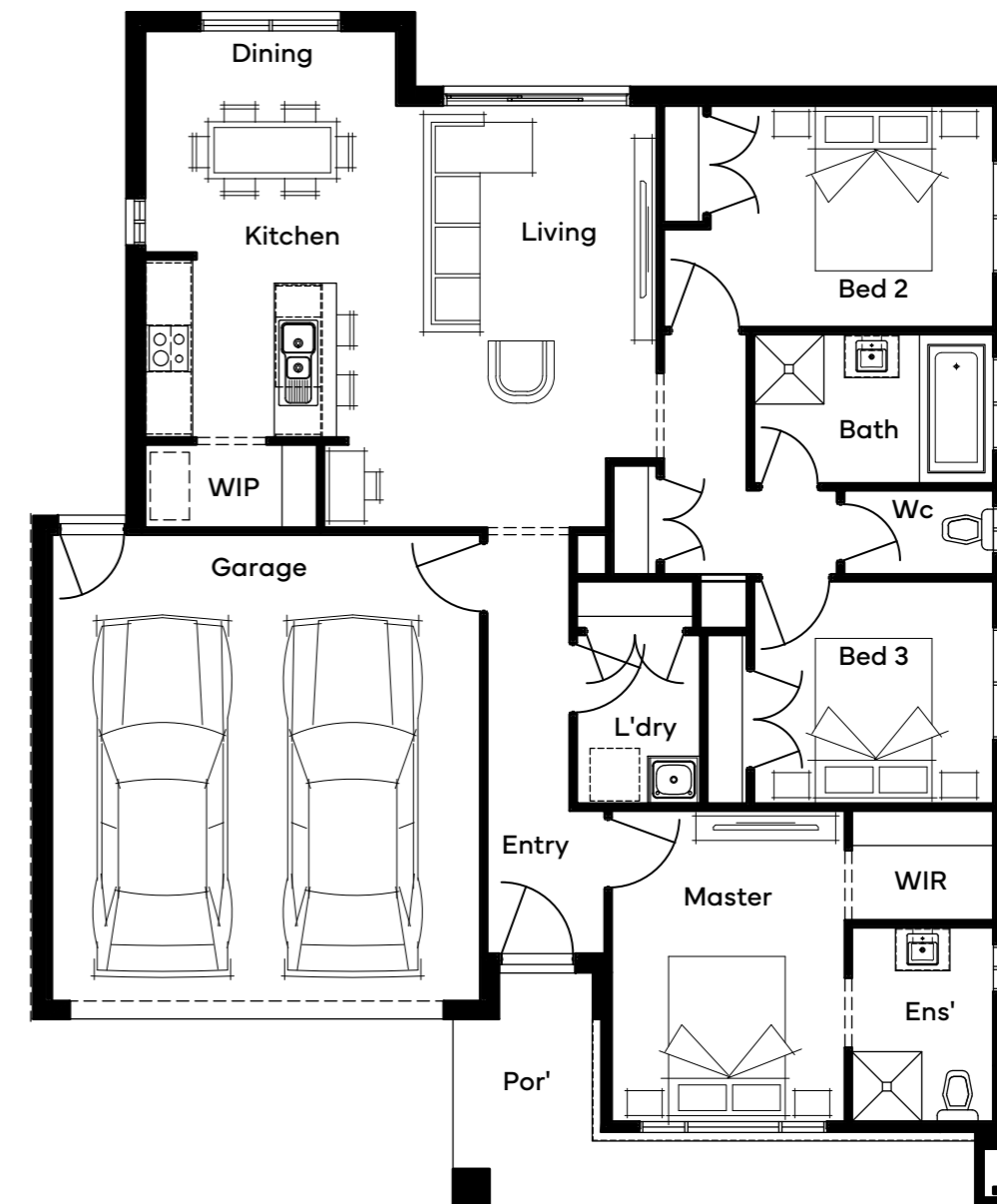
Ground Floor	119.32m ²	12.84sq
Garage	36.25m ²	3.90sq
Porch	9.57m ²	1.03sq
Total	165.14m²	17.78sq

Structural Options

- + Rear Flip







Scan for all design and facade options available with the Danella 18; or visit simonds.com.au



Standard floorplan shown

All floorplans are for illustrative purposes only and may not represent the final product. Final design may differ to meet developer, NCC and other compliance requirements. Specifications and room sizes may differ based on selected facade.

Fairlight 22

 4
  2
  2
  2

Plan Size (WxL) Minimum Lot Size (WxL)
12.59m x 17.87m **14m x 25m**

Room Sizes

Master Bedroom	3660 x 3900
Bedroom 2	2900 x 4620
Bedroom 3	3000 x 3110
Bedroom 4	3000 x 3000
Family/Dining	5300 x 4500
Kitchen	2660 x 4040
Lounge	3800 x 2900
Garage	6000 x 5510

Facade Options

- + Arnott + Landy + Catani
- + Mill + Olley + Garrett
- + Sunset + Dune

Specifications

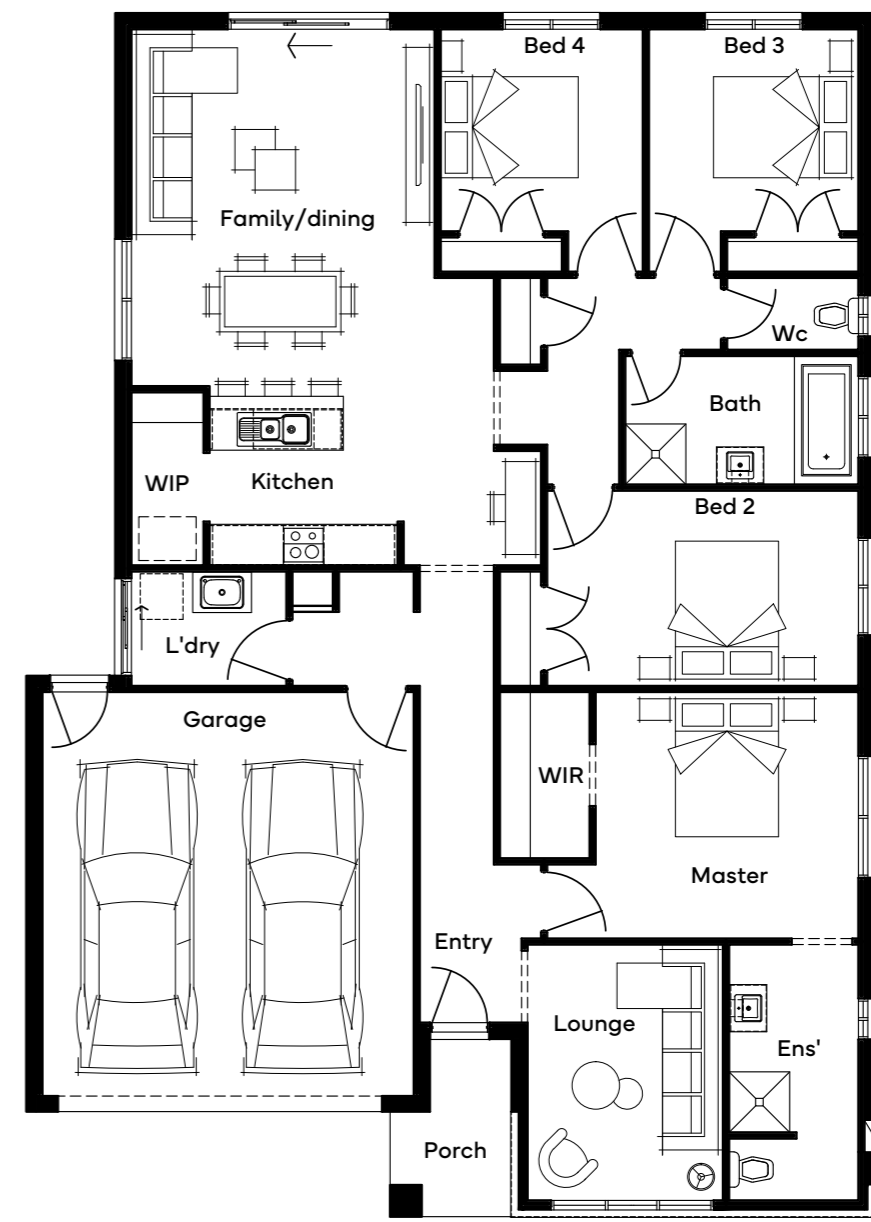
Ground Floor	163.06m ²	17.55sq
Garage	36.40m ²	3.92sq
Porch	4.11m ²	0.44sq
Total	203.57m²	21.91sq

Structural Options

- + Rear Flip
- + Butler's Pantry



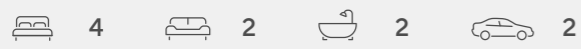
Scan for all design and facade options available with the Fairlight 22; or visit simonds.com.au



Standard floorplan shown

All floorplans are for illustrative purposes only and may not represent the final product. Final design may differ to meet developer, NCC and other compliance requirements. Specifications and room sizes may differ based on selected facade.

Nowra 24



Plan Size (WxL) **12.47m x 20.70m**
 Minimum Lot Size (WxL) **14m x 28m**

Room Sizes

Master Bedroom	3600 x 4190
Bedroom 2	2900 x 3520
Bedroom 3	2900 x 4120
Bedroom 4	3000 x 3590
Family	4450 x 3960
Dining	4450 x 3500
Kitchen	2980 x 2730
Living	3680 x 4190
Garage	6000 x 5510

Facade Options

- + Arnott + Landy + Catani
- + Mill + Olley + Garrett
- + Sunset + Dune

Specifications

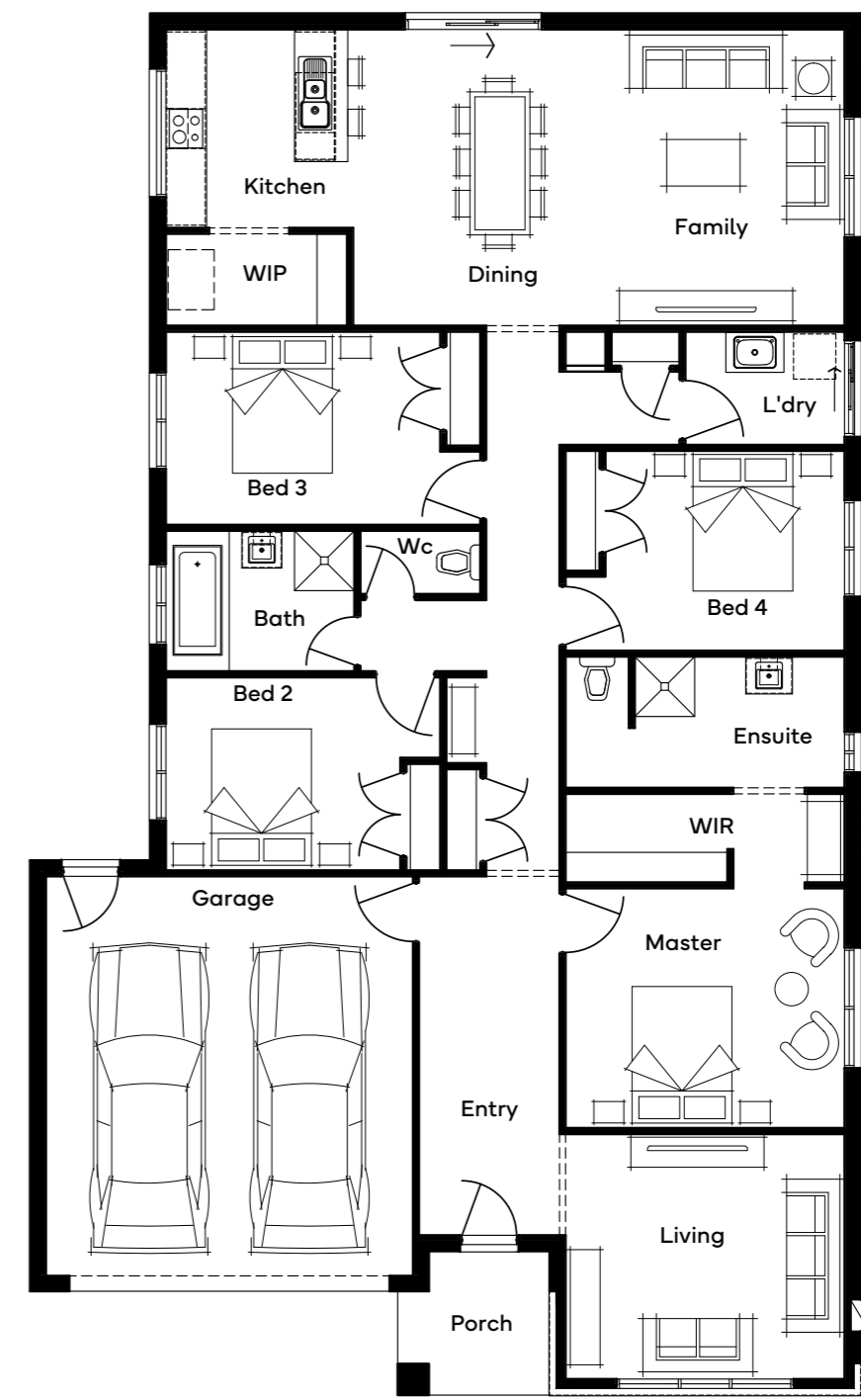
Ground Floor	186.20m ²	20.04sq
Garage	36.40m ²	3.92sq
Porch	4.64m ²	0.50sq
Total	227.24m²	24.46sq

Structural Options

- + Butler's Pantry
- + Kitchen & Living
- + Kitchen & Living, Butler's Pantry
- + Master to Front
- + Master to Front & Alfresco



Scan for all design and facade options available with the Nowra 24; or visit simonds.com.au



Standard floorplan shown

All floorplans are for illustrative purposes only and may not represent the final product. Final design may differ to meet developer, NCC and other compliance requirements. Specifications and room sizes may differ based on selected facade.



EMERGE RANGE

Double Storey

DESIGNS

Double Storey Facades

For facade pricing or material and colour options, please speak to your New Home Specialist, or visit simonds.com.au.

Facade images are for illustrative purposes only and may not represent the final product as shown. Features such as fencing, landscaping, letterbox, decking, driveway and decorative features may not be offered or included as standard by Simonds Homes. Additional cost floor plan options, fixtures and fittings may also be shown. Please speak with a New Home Specialist for further details.



Denmark

✓ INCLUDED



Esmond

✓ INCLUDED



Brookstead

+ UPGRADE



Farleigh

+ UPGRADE



Loch

✓ INCLUDED



Ventnor

✓ INCLUDED



Fortuna

+ UPGRADE



Forum

+ UPGRADE



Astor

+ UPGRADE



Bennett

+ UPGRADE



Jetty

+ UPGRADE



Redwood

+ UPGRADE

Double Storey

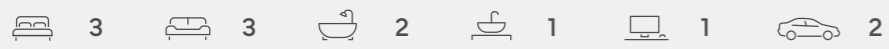
10.5m+ Lot Width

Home Designs

Min Lot Depth	Design							
21	Gordon 24	3	3	2	1	1	2	-
25	Gordon 30	3	3	2	1	1	2	1



Gordon 24



Plan Size (WxL) **10.50m x 14.87m**
 Minimum Lot Size (WxL) **10.5m x 21m**

Room Sizes

Master Bedroom	4220 x 3580
Bedroom 2	3000 x 3000
Bedroom 3	3000 x 3000
Rumpus	3970 x 3380
Family	4420 x 2780
Dining	3970 x 2930
Kitchen	3670 x 2510
Lounge	3700 x 2940
Garage	6000 x 5510

Facade Options

- + Loch
- + Denmark
- + Ventnor
- + Esmond
- + Redwood
- + Forum
- + Bennett
- + Jetty
- + Farleigh
- + Brookstead
- + Fortuna
- + Astor

Specifications

Ground Floor	94.18m ²	10.14sq
First Floor	91.84m ²	9.89sq
Garage	36.25m ²	3.90sq
Porch	2.43m ²	0.26sq
Total	224.70m²	24.19sq

Structural Options

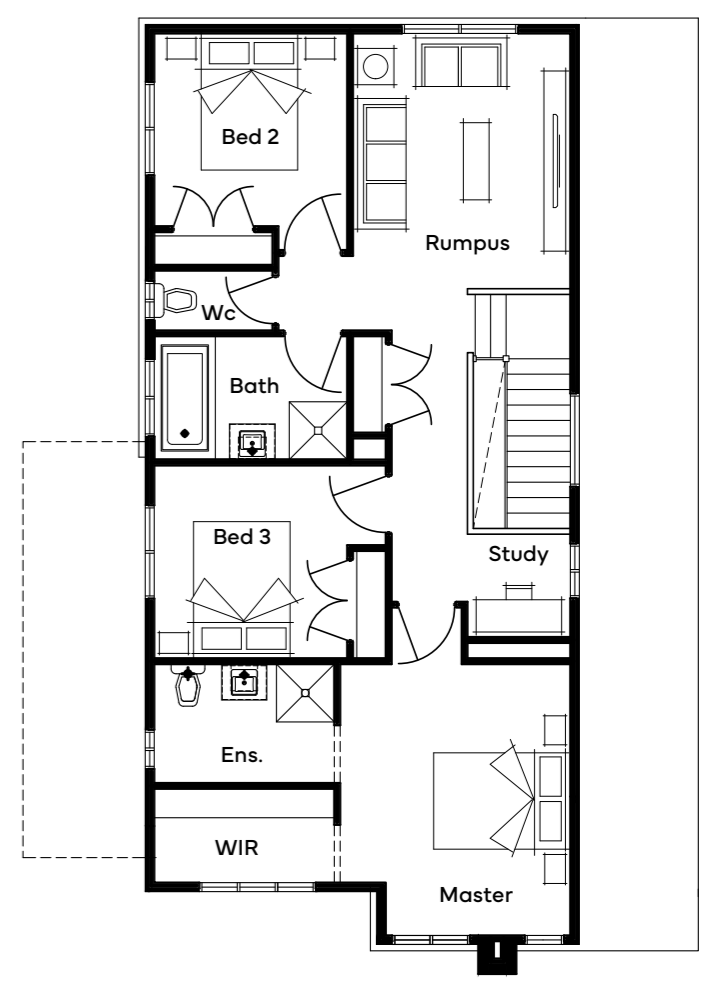
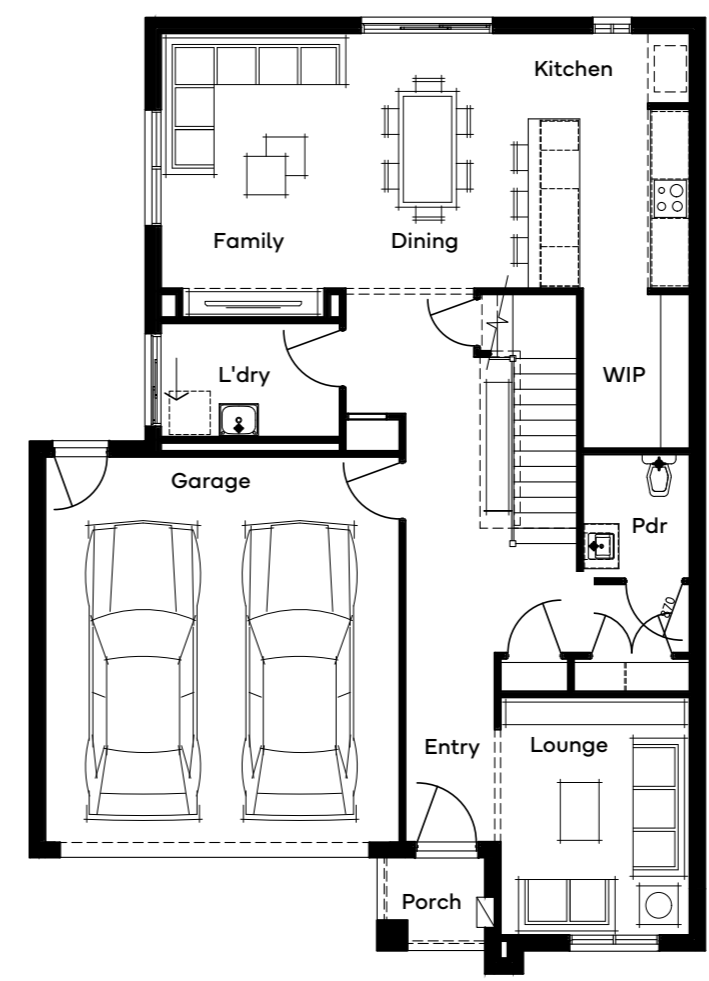
- + Guest Bed
- + Powder Room
- + Ensuite
- + Butler's Pantry
- + WIR
- + Bed 4



Scan for all design and facade options available with the Gordon 24; or visit simonds.com.au

GROUND FLOOR

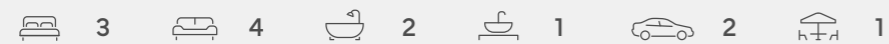
FIRST FLOOR



Standard floorplan shown

All floorplans are for illustrative purposes only and may not represent the final product. Final design may differ to meet developer, NCC and other compliance requirements. Specifications and room sizes may differ based on selected facade.

Gordon 30



Plan Size (WxL) **10.50m x 18.35m**
 Minimum Lot Size (WxL) **10.5m x 25m**

Room Sizes

Master Bedroom	4460 x 3580
Bedroom 2	3000 x 3190
Bedroom 3	3000 x 3190
Rumpus	3000 x 3800
Family	4410 x 3790
Dining	3270 x 4430
Kitchen	3890 x 4430
Garage	6000 x 5510
Alfresco	3360 x 3790

Facade Options

- + Loch
- + Denmark
- + Ventnor
- + Esmond
- + Redwood
- + Forum
- + Bennett
- + Jetty
- + Farleigh
- + Brookstead
- + Fortuna
- + Astor

Specifications

Ground Floor	111.79m ²	12.03sq
First Floor	114.67m ²	12.34sq
Garage	36.19m ²	3.90sq
Alfresco	12.73m ²	1.37sq
Porch	2.43m ²	0.26sq
Total	277.81m²	29.90sq

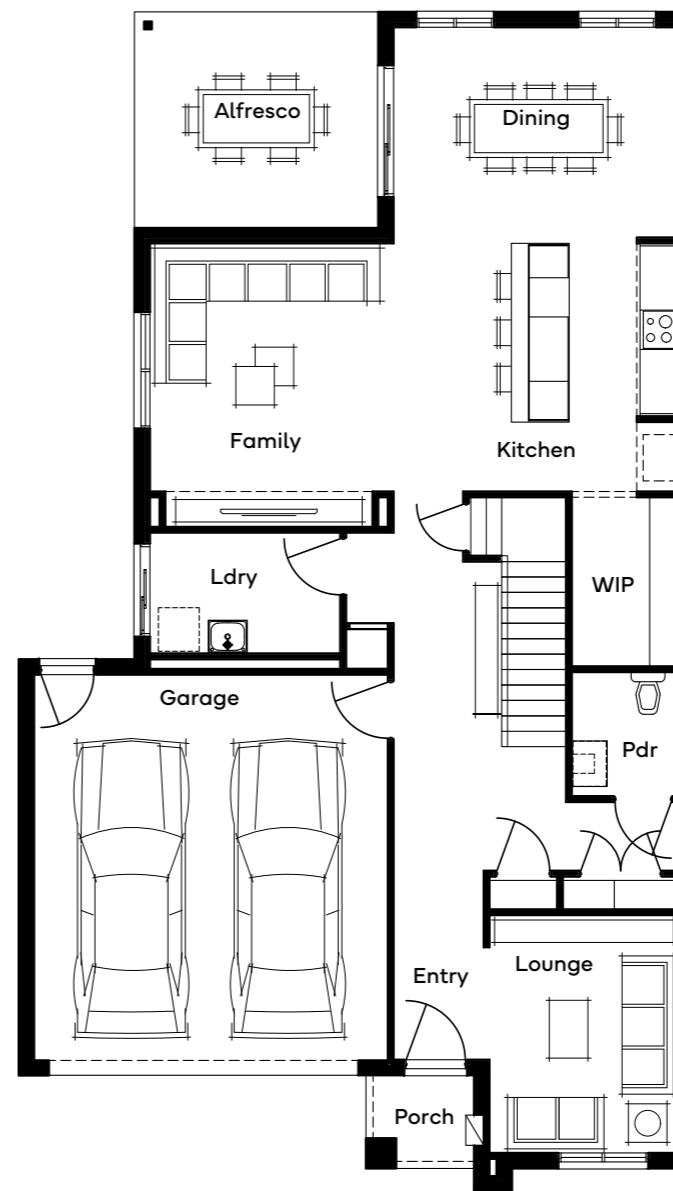
Structural Options

- + Guest Bed
- + Ensuite
- + Butler's Pantry
- + Bed 5 ILO Rumpus
- + 3 Bed FF

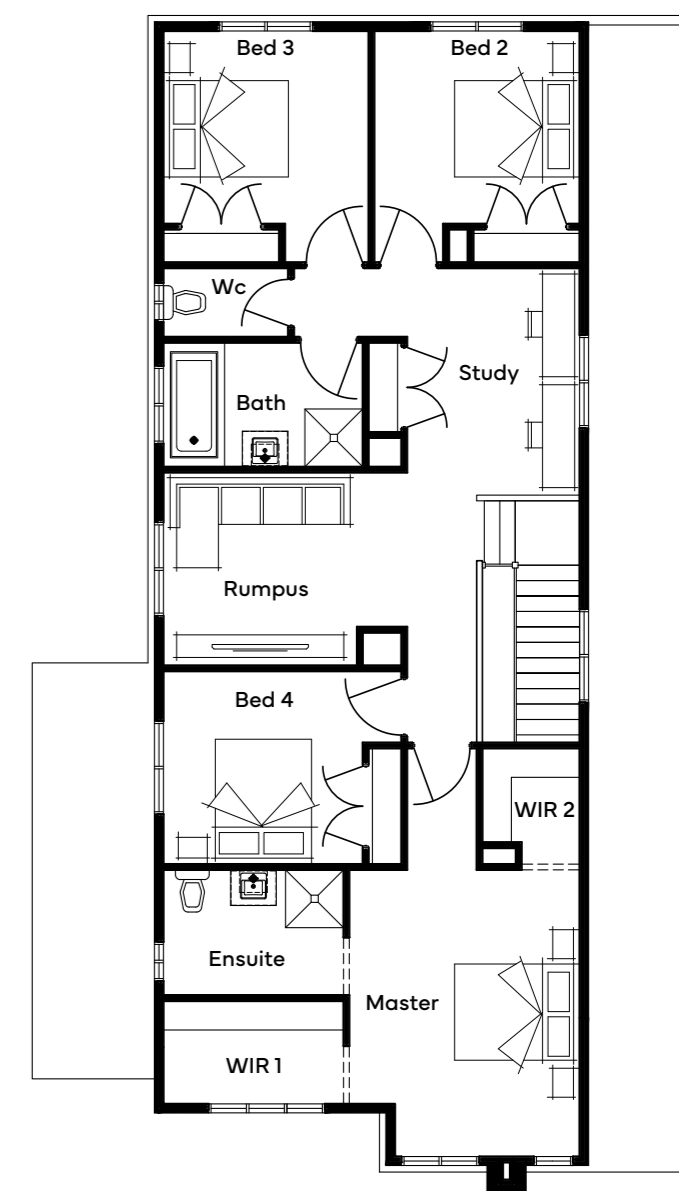


Scan for all design and facade options available with the Gordon 30; or visit simonds.com.au

GROUND FLOOR



FIRST FLOOR










Standard floorplan shown

All floorplans are for illustrative purposes only and may not represent the final product. Final design may differ to meet developer, NCC and other compliance requirements. Specifications and room sizes may differ based on selected facade.

Double Storey

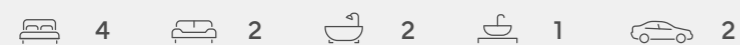
12.5m+ Lot Width

Home Designs

Min Lot Depth	Design							
21	Vasse 24	3	2	2	1	1	2	-
21	Rockpool 24	3	2	2	1	1	2	-



Vasse 24



Plan Size (WxL) Minimum Lot Size (WxL)
10.43m x 15.23m **12.5m x 21m**

Room Sizes

Master Bedroom	3200 x 4310
Bedroom 2	2900 x 3000
Bedroom 3	2900 x 2700
Sitting	3900 x 2750
Family	3390 x 3000
Dining	4600 x 2800
Kitchen	4600 x 2470
Living	3830 x 3110
Garage	6000 x 5550

Facade Options

- + Loch + Redwood + Farleigh
- + Denmark + Forum + Brookstead
- + Ventnor + Bennett + Fortuna
- + Esmond + Jetty + Astor

Specifications

Ground Floor	93.29m ²	10.04sq
First Floor	92.32m ²	9.94sq
Garage	36.51m ²	3.93sq
Porch	4.13m ²	0.44sq
Total	226.25m²	24.35sq

Structural Options

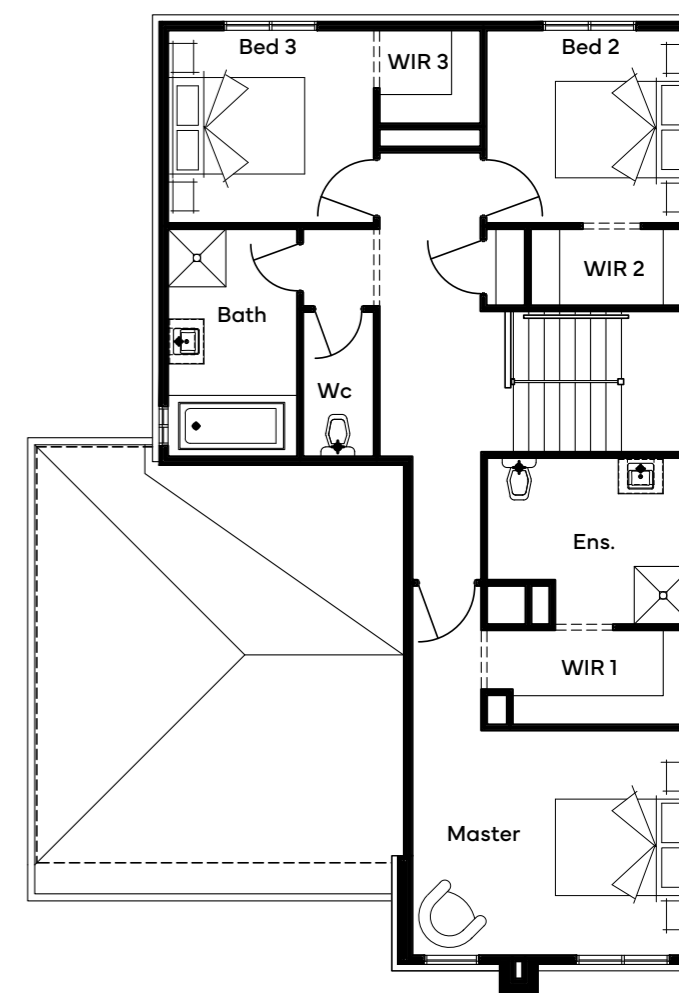
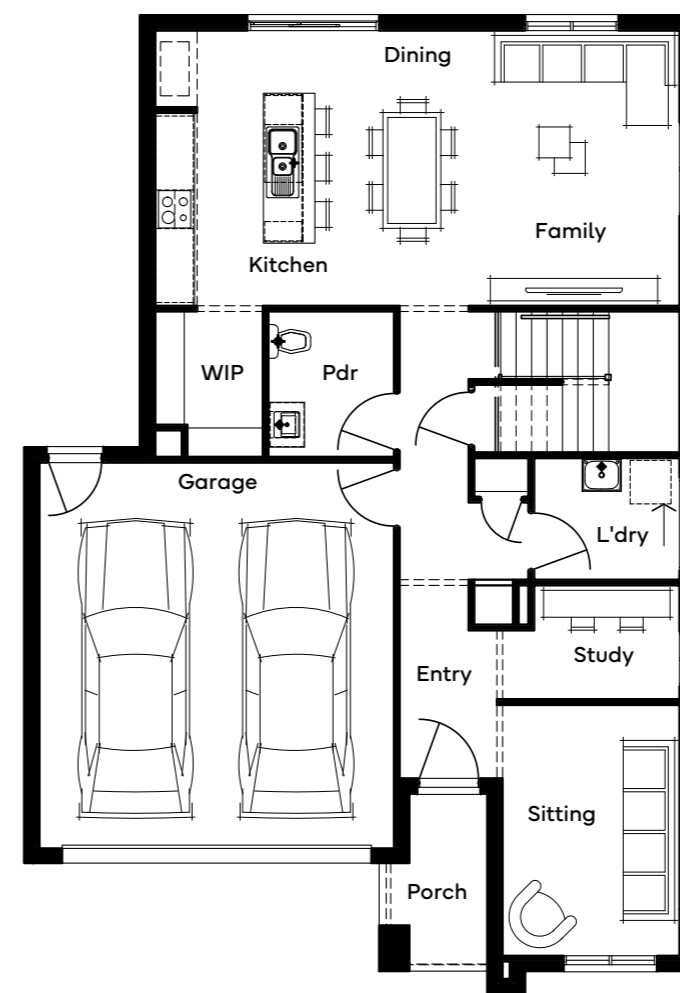
- + Butler's Pantry + Guest Bed
- + Ensuite



Scan for all design and facade options available with the Vasse 24; or visit simonds.com.au

GROUND FLOOR

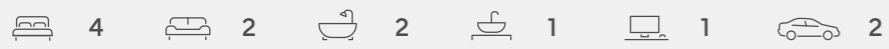
FIRST FLOOR



Standard floorplan shown

All floorplans are for illustrative purposes only and may not represent the final product. Final design may differ to meet developer, NCC and other compliance requirements. Specifications and room sizes may differ based on selected facade.

Rockpool 24



Plan Size (WxL) 9.77m x 13.64m
 Minimum Lot Size (WxL) 12.5m x 21m

Room Sizes

Master Bedroom	3500 x 4350
Bedroom 2	3000 x 3200
Bedroom 3	3000 x 3200
Family	4280 x 3280
Dining	4280 x 2390
Kitchen	4280 x 2480
Study	1770 x 2260
Sitting	3900 x 2750
Garage	6000 x 5510

Facade Options

- + Loch
- + Denmark
- + Ventnor
- + Esmond
- + Redwood
- + Forum
- + Bennett
- + Jetty
- + Farleigh
- + Brookstead
- + Fortuna
- + Astor

Specifications

Ground Floor	86.85m ²	9.35sq
First Floor	92.27m ²	9.93sq
Garage	36.53m ²	3.93sq
Alfresco	9.00m ²	0.97sq
Porch	4.01m ²	0.45sq
Total	228.66m²	24.61sq

Structural Options

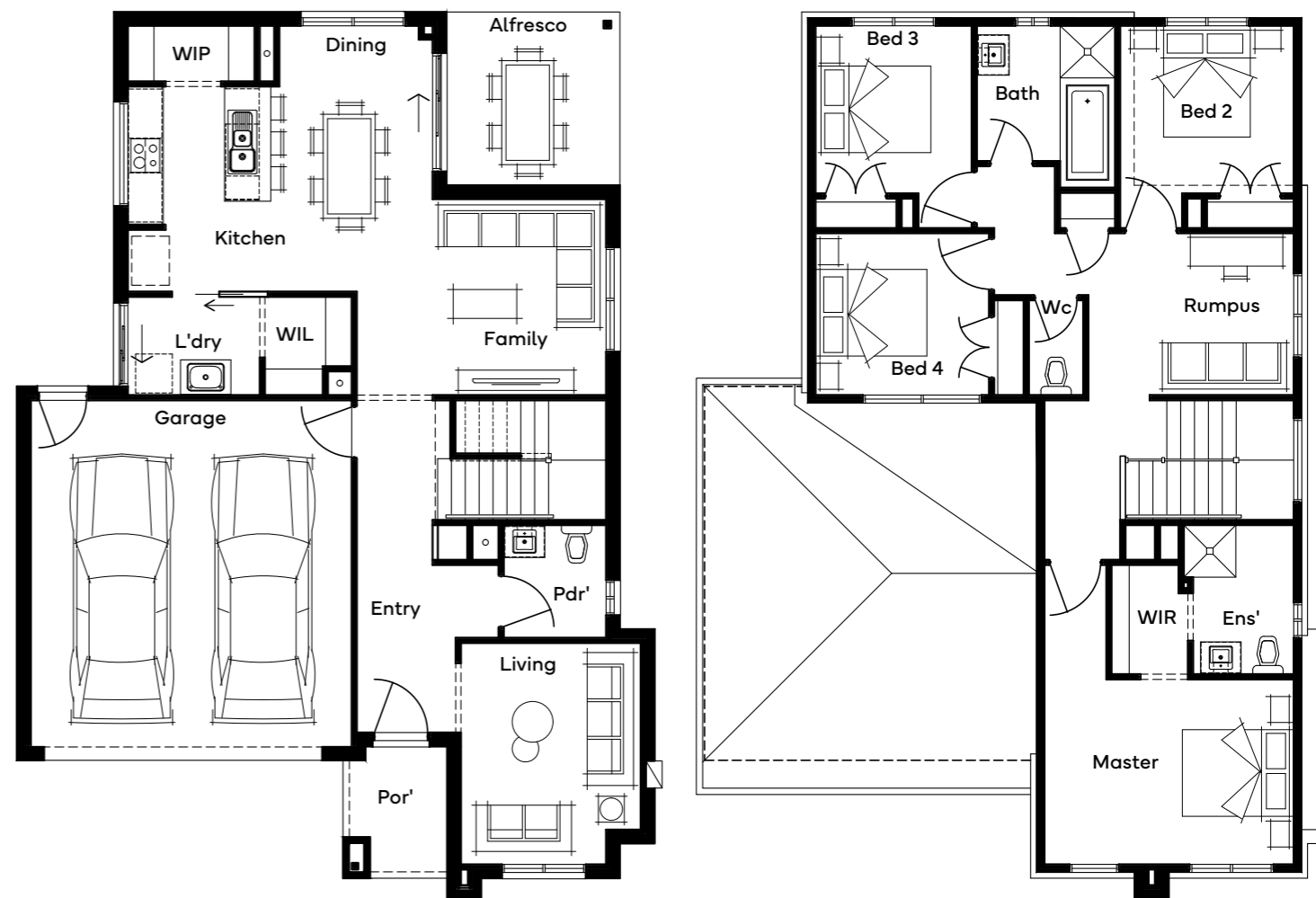
- + Kitchen & Butler's
- + Guest Bed
- + Kitchen & Butler's 2
- + Alternate First Floor



Scan for all design and facade options available with the Rockpool 24; or visit simonds.com.au

GROUND FLOOR

FIRST FLOOR





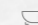
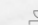


Standard floorplan shown

All floorplans are for illustrative purposes only and may not represent the final product. Final design may differ to meet developer, NCC and other compliance requirements. Specifications and room sizes may differ based on selected facade.

Double Storey

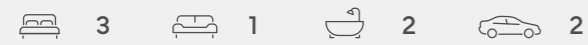
14m+ Lot Width

Home Designs

Min Lot Depth	Design							
21	Jackalope 25	3	1	2	-	-	2	-



Jackalope 25



Plan Size (WxL) **11.99m x 13.79m**
 Minimum Lot Size (WxL) **14m x 21m**

Room Sizes

Master Bedroom	3550 x 5870
Bedroom 2	3600 x 3000
Bedroom 3	3500 x 3100
Guest Bed	3300 x 3350
Family	4710 x 3650
Dining	4710 x 3000
Kitchen	4710 x 2940
Garage	6000 x 5550

Facade Options

- + Loch
- + Denmark
- + Ventnor
- + Esmond
- + Redwood
- + Forum
- + Bennett
- + Jetty
- + Farleigh
- + Brookstead
- + Fortuna
- + Astor

Specifications

Ground Floor	99.16m ²	10.67sq
First Floor	97.62m ²	10.51sq
Garage	36.53m ²	3.93sq
Porch	4.15m ²	0.15sq
Total	237.46m ²	25.56sq

Structural Options

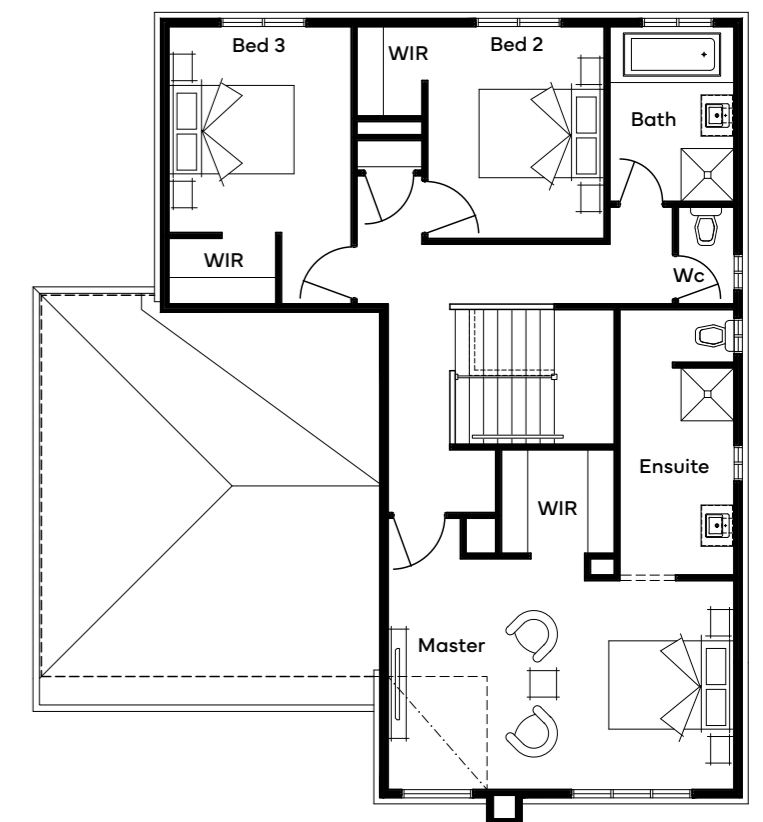
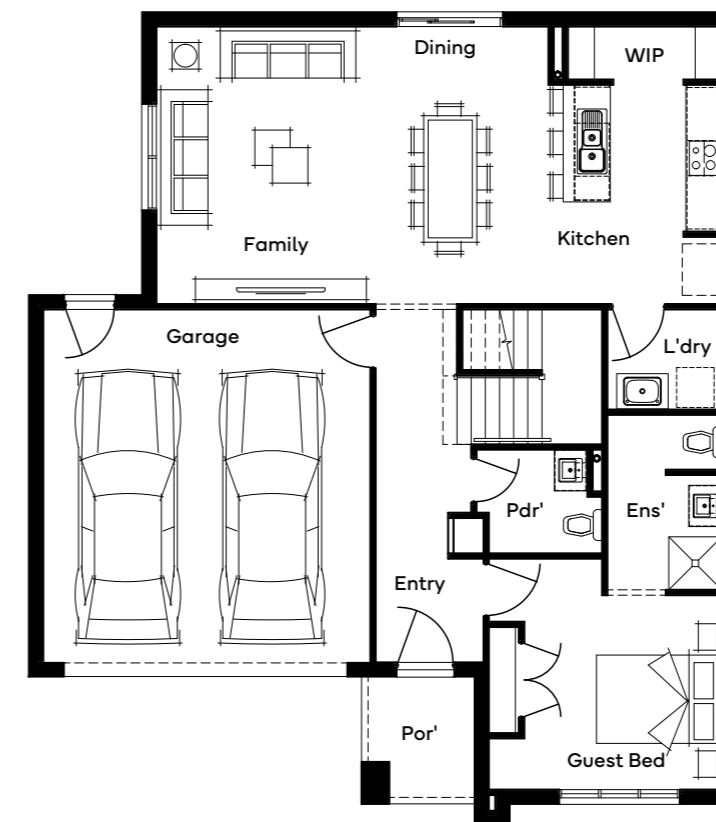
- + Living to Front
- + Build Over Garage



Scan for all design and facade options available with the Jackalope 25, or visit simonds.com.au

GROUND FLOOR

FIRST FLOOR



Standard floorplan shown

All floorplans are for illustrative purposes only and may not represent the final product. Final design may differ to meet developer, NCC and other compliance requirements. Specifications and room sizes may differ based on selected facade.



All floorplans, facade images and photographs have been used for illustrative purposes only and may not represent the final product as shown. Final design may differ to meet developer, NCC and other compliance requirements. All furniture, screens, landscaping, pergolas and decorative finishes are not offered by Simonds Homes. Additional cost floor plan options, fixtures and fittings may also be shown.



How Australia Homes

